

Assemble in the Forest



Assemble in the Forest



Credit (cover image, back cover and above image) :

FOI 23 Perry Harris

The spectacular Assembly Rooms will be the venue for the 2023 Forest of Imagination where we will celebrate 10 years as a contemporary arts event in Bath.

The National Trust has kindly invited Forest of Imagination to develop a unique event as part of their transition plans for the world-famous Assembly Rooms which will reimagine the building as a focus for the community of Bath.

We are inspired by the opportunity to link art, nature, and the social life of the city into an experience that takes full advantage of the grand internal rooms and the distinctive outdoor spaces.

All around the world people use forests as places to find respite, either individually or together.

'Assemble in the Forest' is an invitation to come together and celebrate the beauty and biodiversity of Bath and once again to showcase the imagination of our community. In addition, it provides an opportunity to shine a light on the importance of forests across the world and what they mean to us in Bath, especially in response to the climate emergency.

Assembly Rooms, Bath - Location



Community Forest

Building on the successful Forest of Imagination 'Living Tree' events at the Egg theatre during 2021 and 2022, we propose a special installation within the Assembly Rooms transforming one or more of the grand formal spaces into an abstract reflection of a forest environment and its interaction with people.



More Trees for BANES at Warleigh Weir



Rainforest Concern Gurukula Forest India

Forest Community

Externally we imagine creating an 'Urban Glade', a calming green space in the city but also a venue for interactive installations, stories, music, creative interaction and for placing a focus on the life and diversity of the forest. The intention this year is to expand the event into an experience that can be enjoyed for more than a few days and to invite collaboration with other creative and ecological initiatives within and around Bath. We want to invite the creative and cultural ecology of the city to 'Assemble in the Forest' and showcase our collective imagination to all. More than that, we want to inspire action across the city in response to the climate and biodiversity emergencies and to find new ways to create inspiring landscapes and habitats that enrich the lives of everyone.

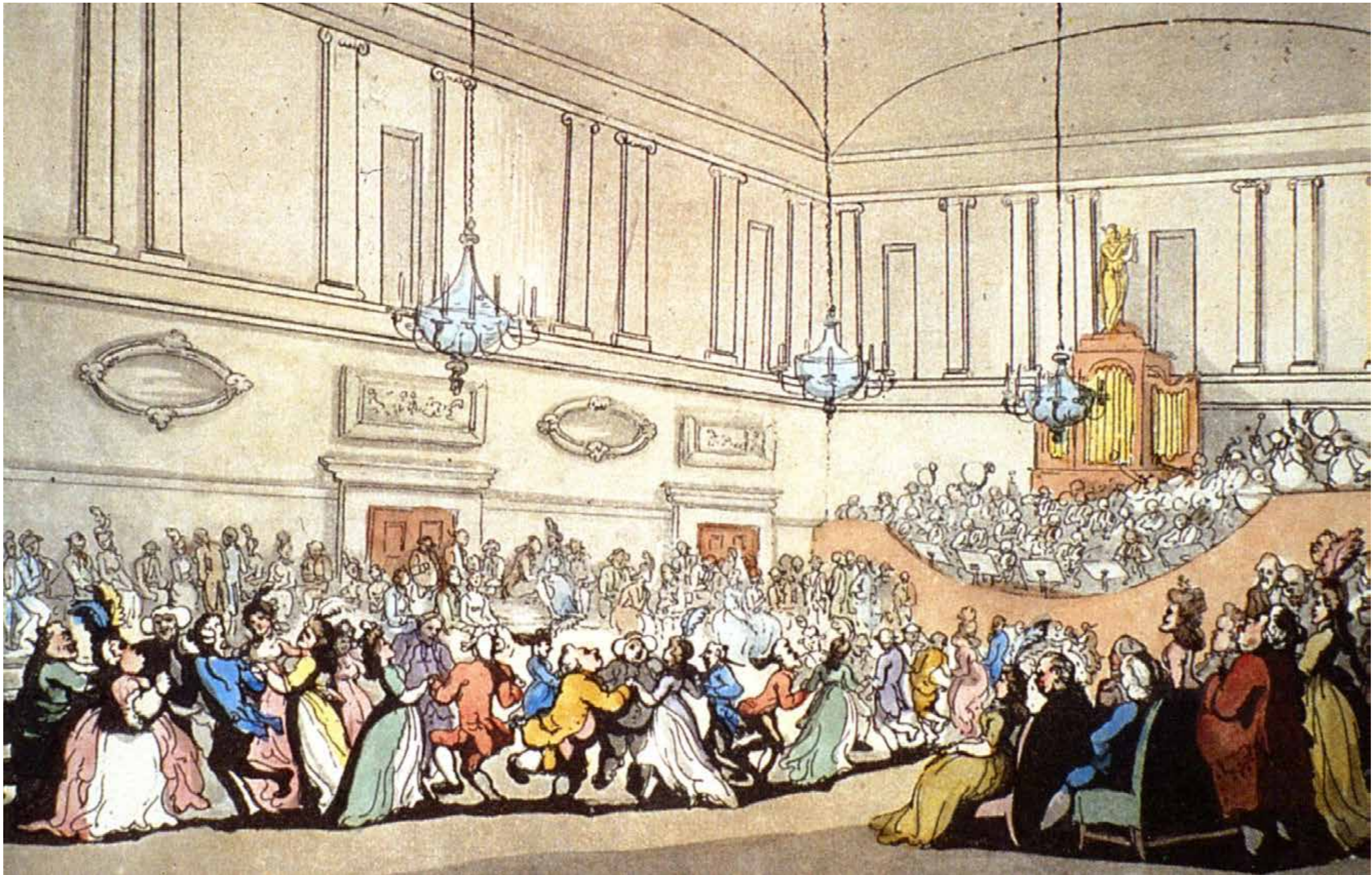


Wild Beavers on the Avon



Neblina Forest

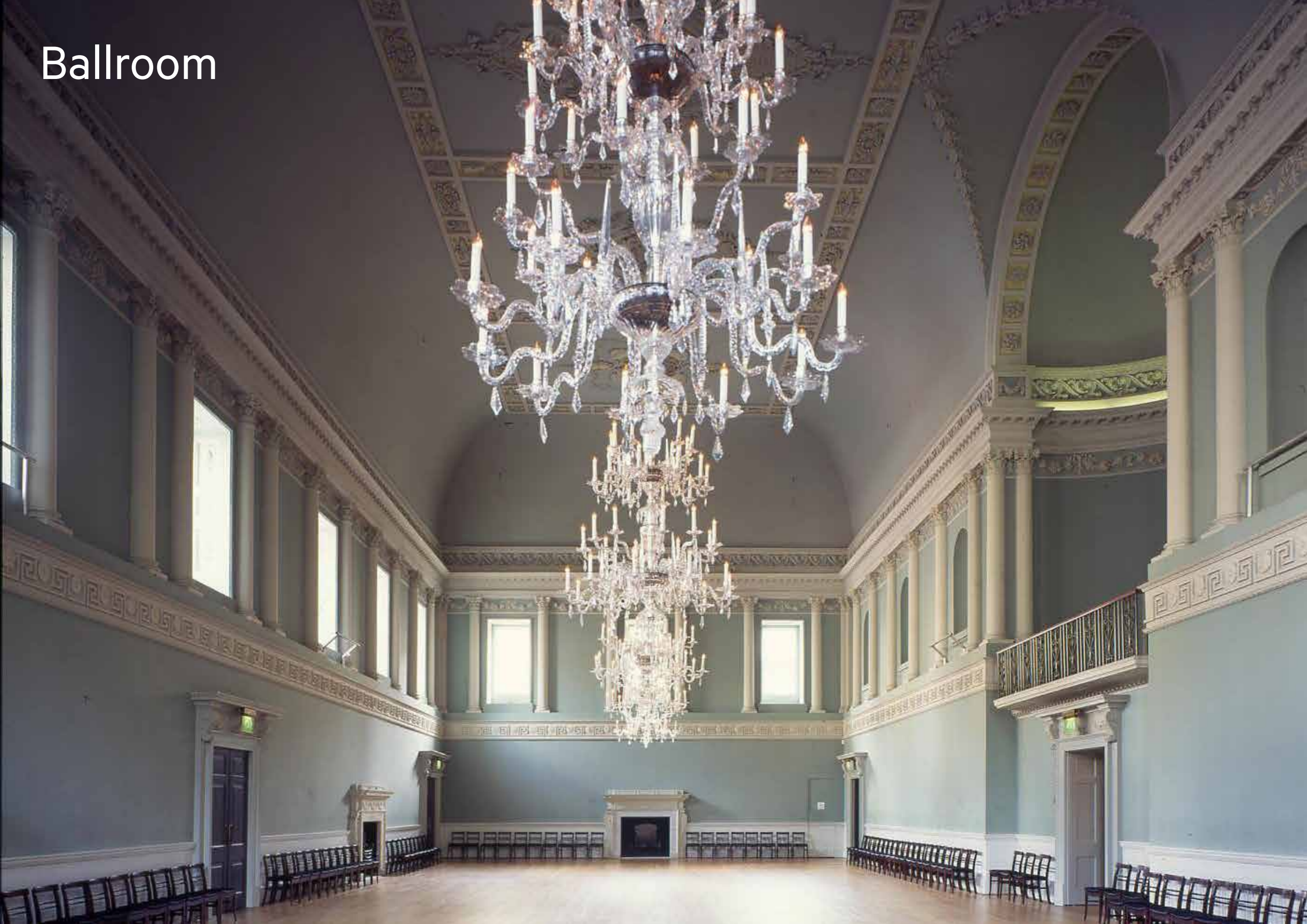
Bath Assembly Rooms



Bath Assembly Rooms were at the heart of fashionable Georgian society, the perfect venue for entertainment. When completed in 1771, they were described as 'the most noble and elegant of any in the kingdom'.

Illustration: 'Ball at the Assembly Rooms Bath (English Dance)
By Thomas Rowlandson 1798

Ballroom



Main Corridor



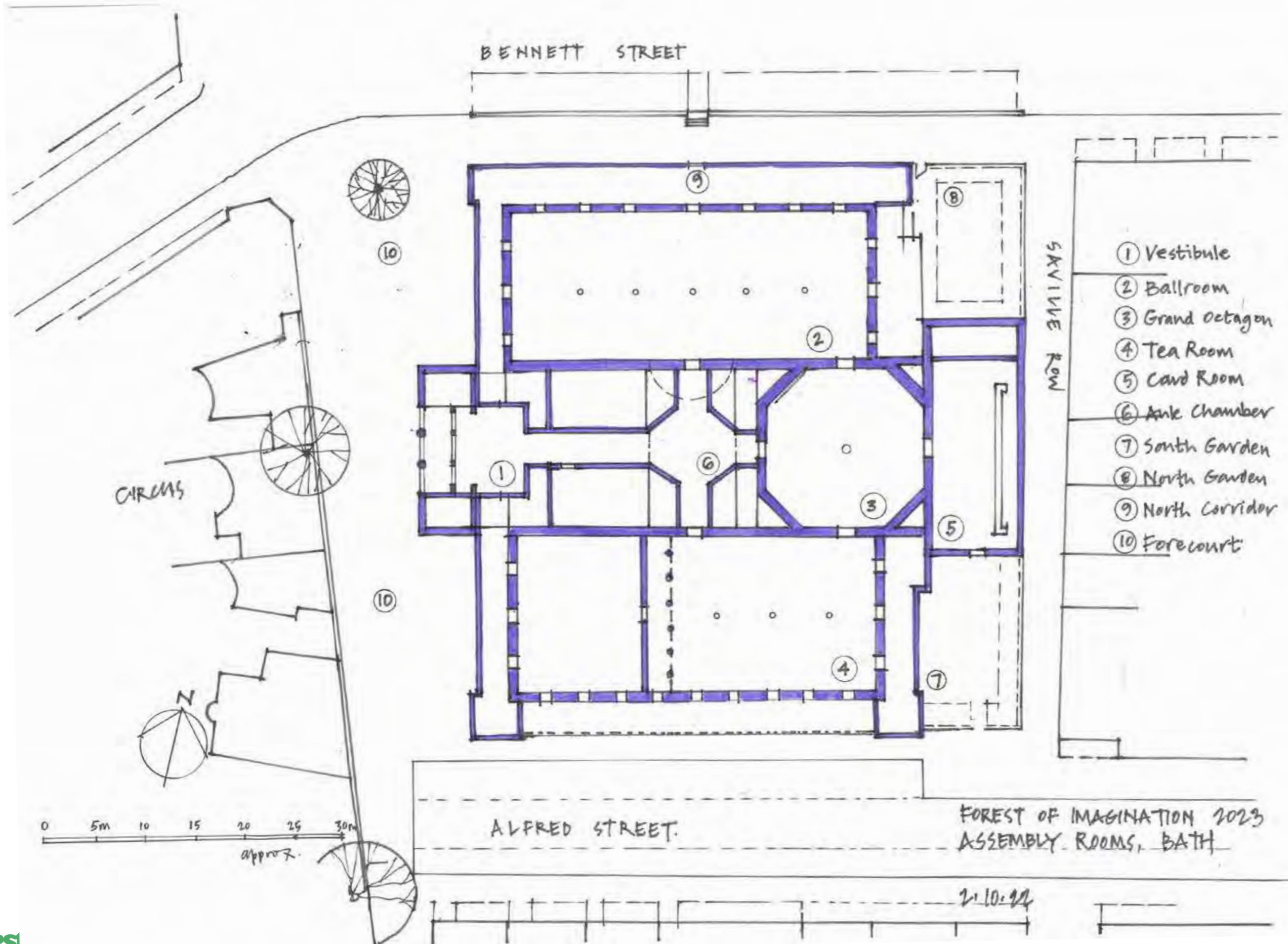
Grand Octagon



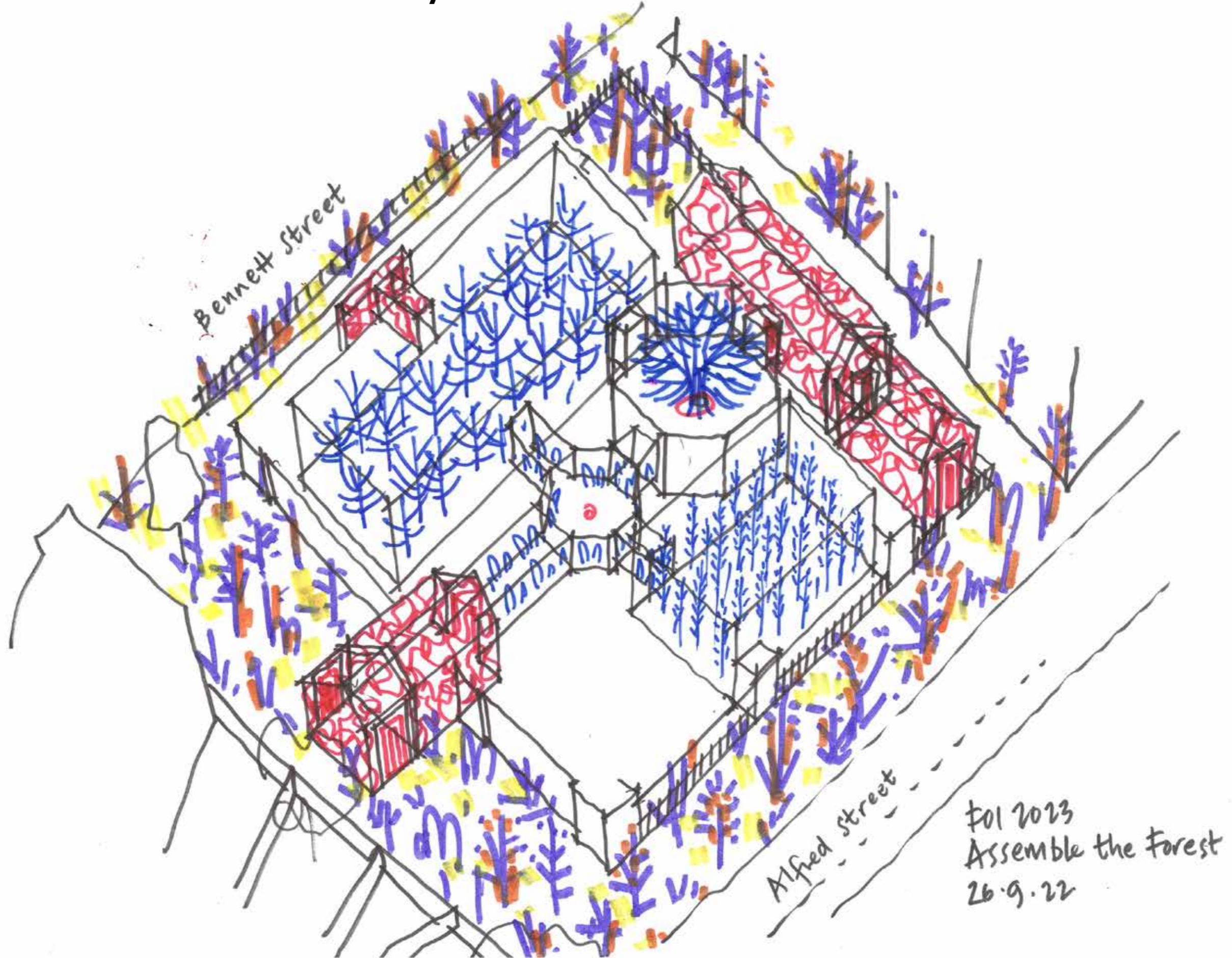
Tea Room



The Site

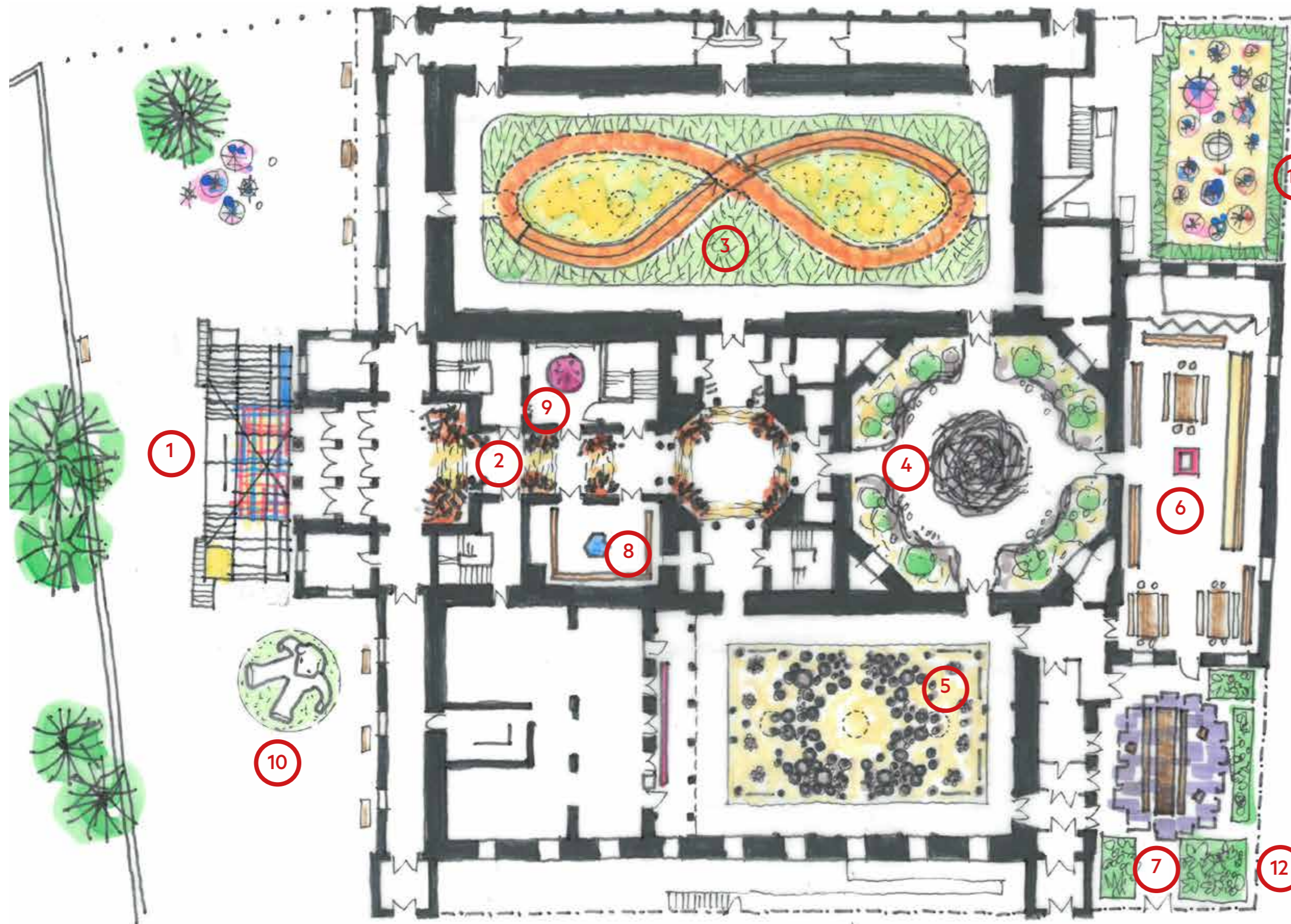


A Forest in the Assembly Rooms



Forest of Imagination 2023

Assembly Rooms, Bath - Illustrative Layout & Content



- 1. Bird Song**
Morag Myerscough/We Are The People
- 2. Dark Forest**
Grant Associates/FCBS/Matt Leece
- 3. Infinite Nature Loop**
Andrew & Nathan Amondson
- 4. Beaver Den**
Grant Associates/Invisible Studio/
Charley Brentnall
- 5. Tree Room**
FCBS/Bath Spa University/Richard
- 6. Documentation Room**
House of Imagination/Amy
Corcoran/Emily Boxall
- 7. Community Forest Shelter**
Invisible Studio/ Charley Brentnall &
Reading University Students
- 8. 'Sitting Quietly with the Moon'**
Clare Day
- 9. 'Its Always Ourselves We Find
In The Sea'**
Martyn Ware
- 10. Dreamer**
Grant Associates
- 11. Extraordinary Forest**
House of Imagination
- 12. Bath Community Kitchen
Forest**
Bath Community Kitchen

Developing Ideas for Themes

Principal Spaces and proposals

Forecourt

A collection of imagined/ invented trees of all shapes and sizes and very colourful.
Dreamer the inflatable Rabbit.

Main Entrance - Bird Song

A fun and colourful pavilion/display added to front of existing building - defining the entrance to the experience. High impact scented planting and sound of bird song. A place to linger, meet and enjoy the Outside – Inside experience.

Main Internal Corridor -The Dark Forest

Taking advantage of the compression of spaces to create moody experience and introducing some topical issues on trees in Bath eg Ash Die Back, Box Tree Moth, Box blight.

Using Lighting and soundscape to emphasise the experience

Potentially a space to reflect on Georgian era global exploitation and deforestation.

Ballroom - Infinite Nature Walk

A unique journey around the space.

Potential elevated views (A ramp upto 1.5m above floor level for inclusive access)

Digital projections and media installations

Grand Octagon – Beaver Den

Woven timber landmark structure with hidden den space within.

Water – real and virtual.

Soundscape and Virtual reality goggles

Tea Room – Team Room

A celebration of trees and forests in Bath and around the world.

Centrepiece structure developed from a 250 yr old beech tree felled in Dec 22 and used to frame the exhibition

Exhibition of Bathscape featuring Images of famous and not so famous views of the Bath landscape setting and a selection of significant Bath trees.

Exhibition of Rainforest Concern featuring images of Ecuador, India and Costa Rica projects and forests and associated wildlife and communities.

Central space for talks and events

Card Room and Entrance – Scented Pavilion and Global Forest Garden + Refreshment space

A space for interaction, workshops and an ever changing and growing display of artworks and installations made by visiting school children families and visitors to the event.

Forest Community Shelter

An alternative version of the main entrance welcome pavilion, fun, colourful but with large central table and benches for community meeting and workshops.

Creative kitchen / catering - linked to outdoor kitchen garden

South garden – Bath Community Kitchen Forest Garden

Transform space into productive herb and vegetable

North garden – Abstract Forest

Installation of weird and wonderful trees

Morag Myerscough and We Are The People Bird Song



Morag Myerscough

Main Entrance -Scented Forest Welcome Pavilion

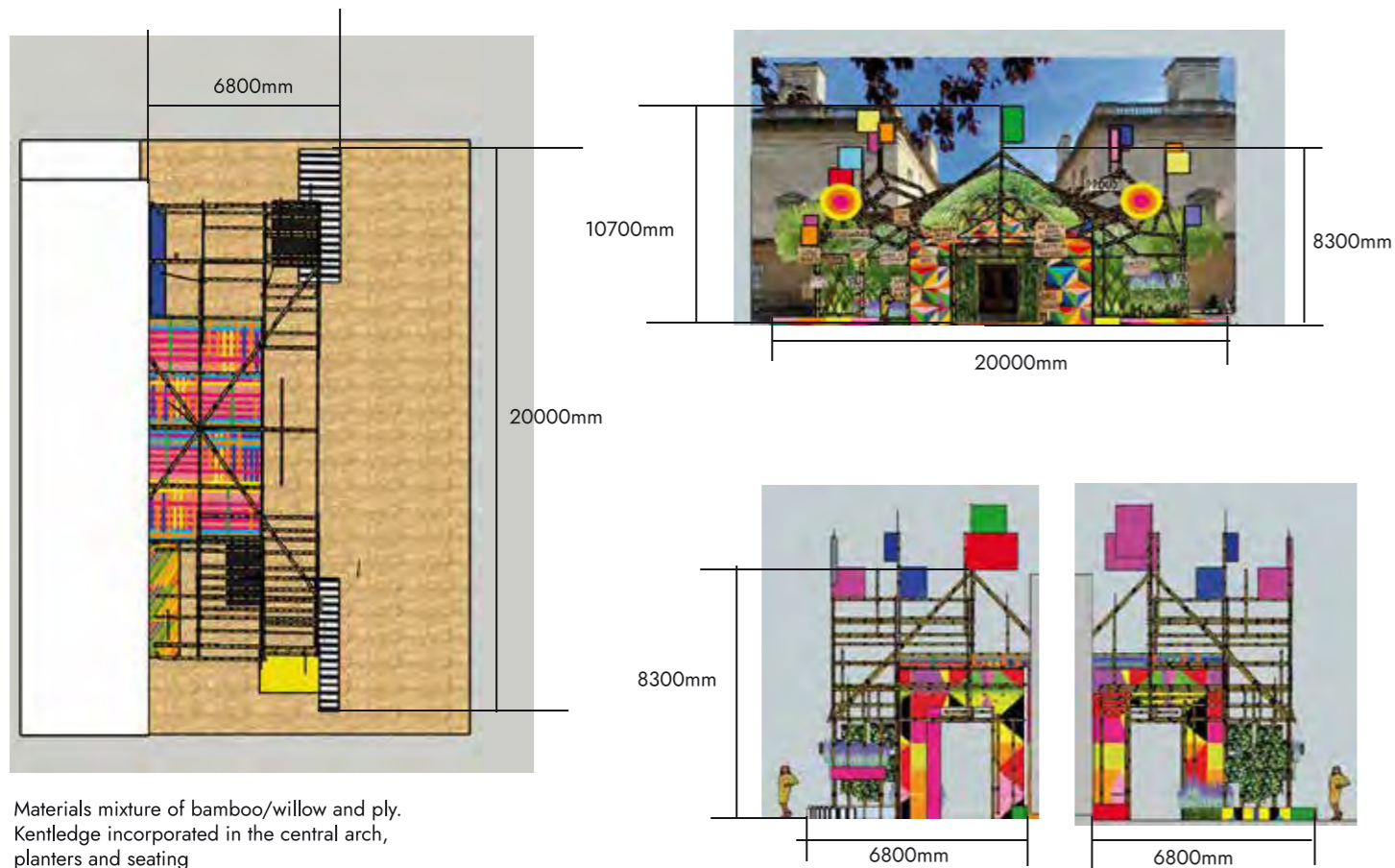
A fun and colourful pavilion/display/ meeting place added to front of existing building to define the entrance to the Assemble in the Forest experience.

The proposal creates a freestanding framed structure sitting just in front of the historic building and combining placards and activist messages with solar panels, weather vanes and scented planting in a form that echoes the historic portico but made from a simple framework of bamboo or similar. These elements will extend partially through the existing portico into the lobby to create a unique inside – outside experience. Heavily scented plants will flow through the structure to create an exotic sensory experience within the vestibule before visitors enter the main rooms of the building.

The whole experience will be designed for inclusivity and a variety of places to sit, meet and gather will be created within and around the structure offering little detailed interactions at all levels.

Bird Song
Community X Morag Myerscough

All dimension are approximate



Materials mixture of bamboo/willow and ply.
Kentledge incorporated in the central arch,
planters and seating



Brothers Amondson

Infinite Nature Loop

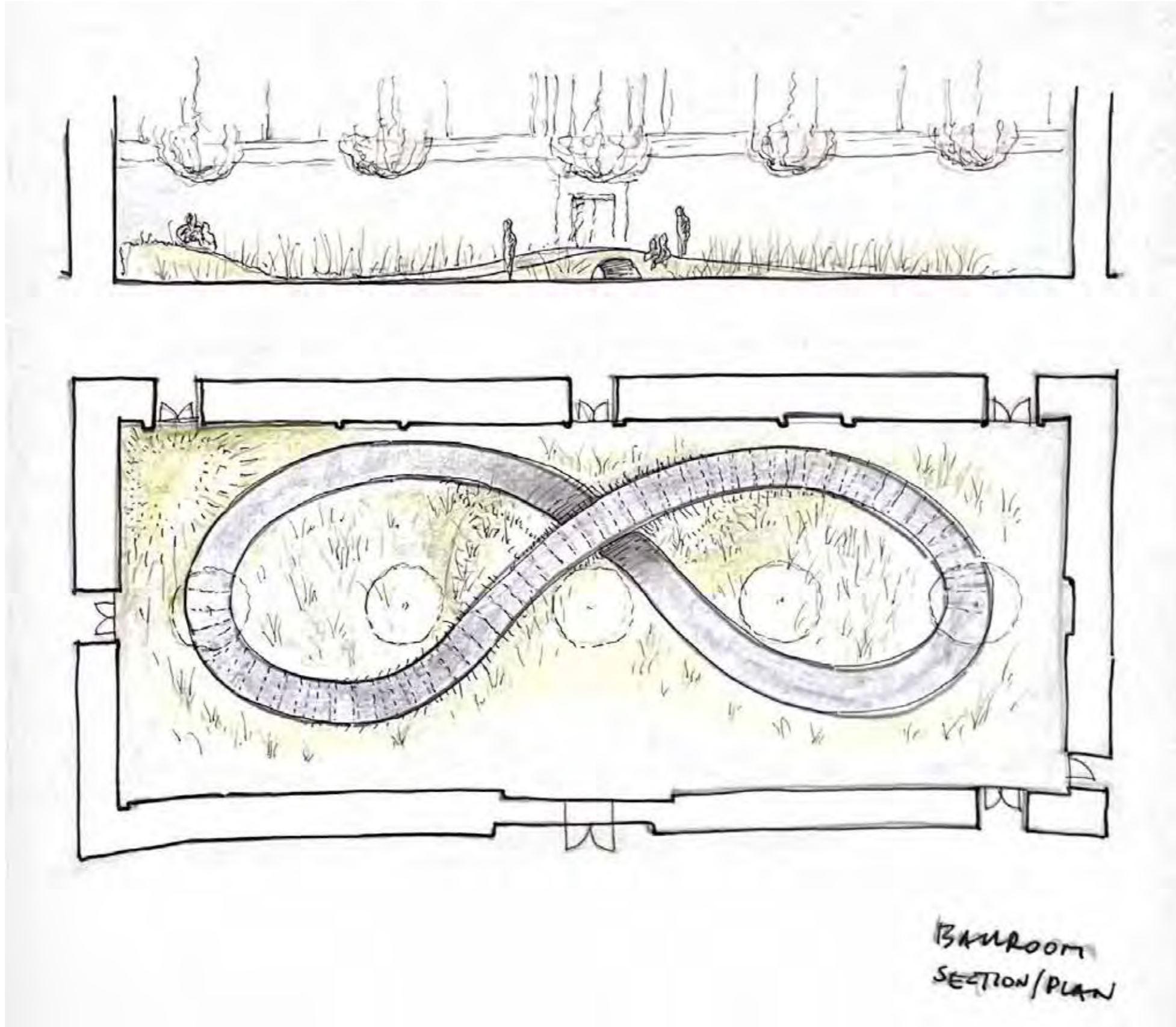


A soft earthen path creates an infinity loop, crossing under a wooden bridge which rises above the tall grasses filling the Ballroom. *The bridge is accessible by all and can be used for performances in the space.

The Infinite Nature Loop offers new elevations and perspectives in the space. Mirrored mylar panels playfully extend the landscape and shapes, bouncing light and reflections to create natural projections. Fans move the wind making the grass dance as projection mapped clouds float lazily across the blue sky of the Ballroom. A soundscape of summer sounds, crickets and birdsong, transport families along their way, cycling through the day in an infinite loop that comes with the early morning fog, lifts as light fills the space and fades into evenings colors and starry fields.

Brothers Amondson

Infinite Nature Loop



Brothers Amondson

Infinite Nature Loop



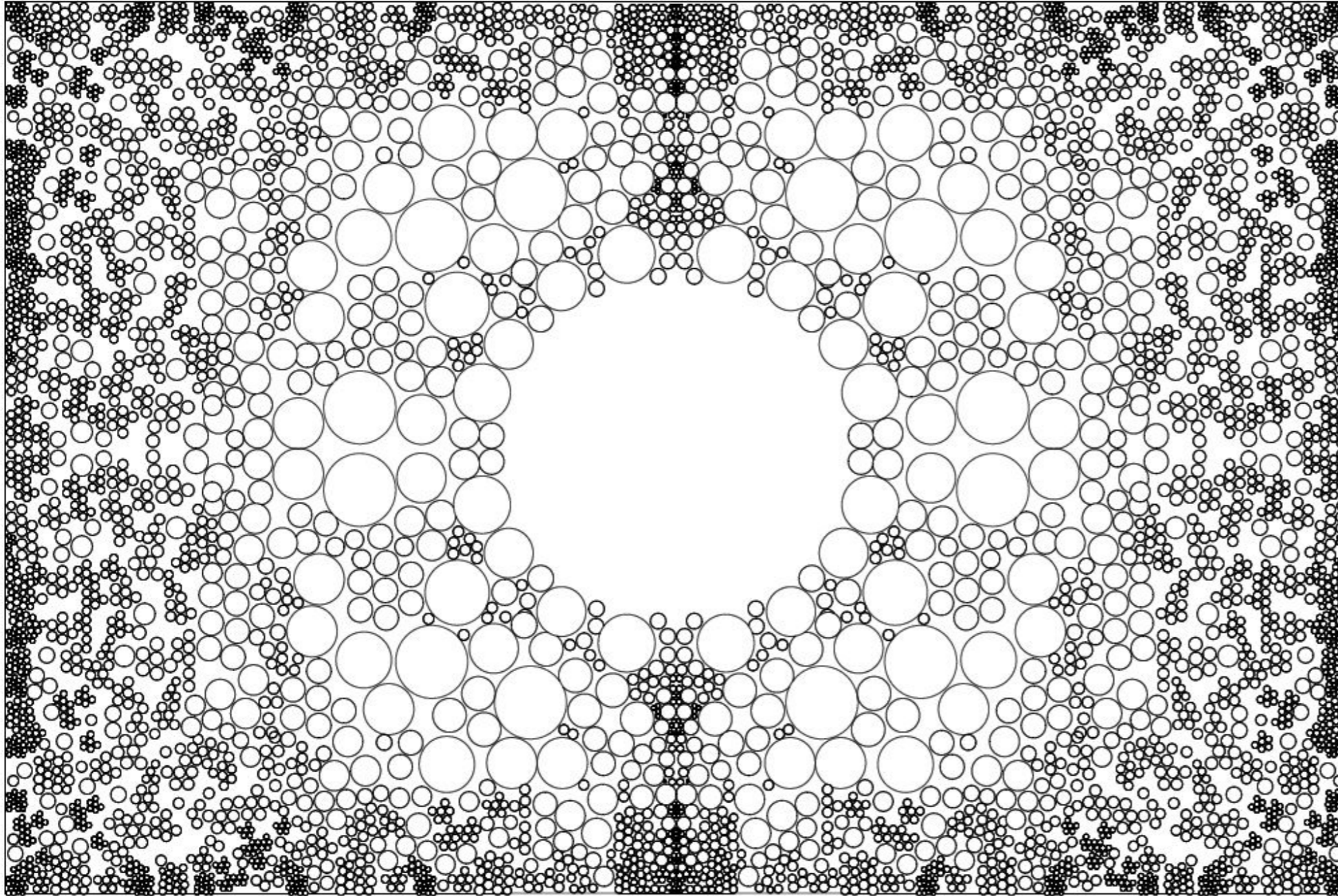
Tea Room

Tree Room



Tea Room

Tree Room



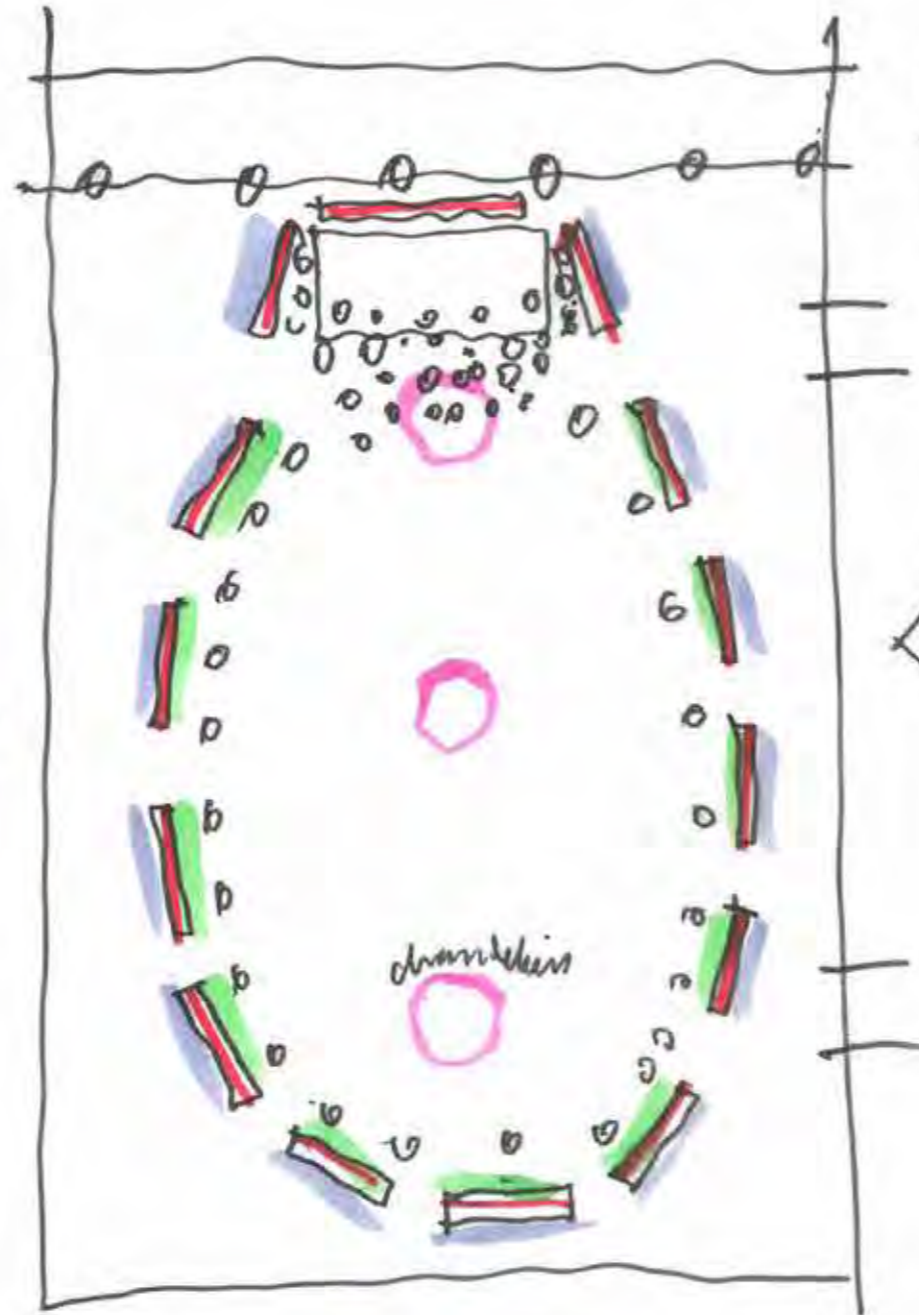
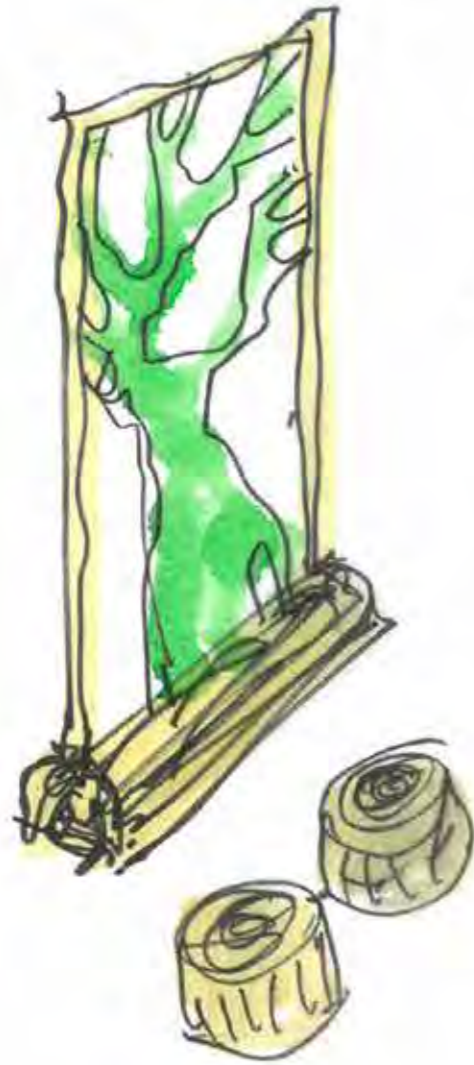
The Tea Room will host an exhibition, talks and events with a focus on our understanding of how our local and global landscapes evolve over time and what threats and opportunities exist at this moment.

The exhibition will feature some of the project work by the Bathscape team with an emphasis on significant trees in the city, special views of Bath and its landscape setting and the emerging mapping and creation of walking routes that explore the rich landscape of the city. This will be complemented by a parallel exhibition of the work of Rainforest Concern. A Bath based charity supporting the conservation of fragile rainforests across the world. The exhibition will be curated by a team at Bath Spa University.

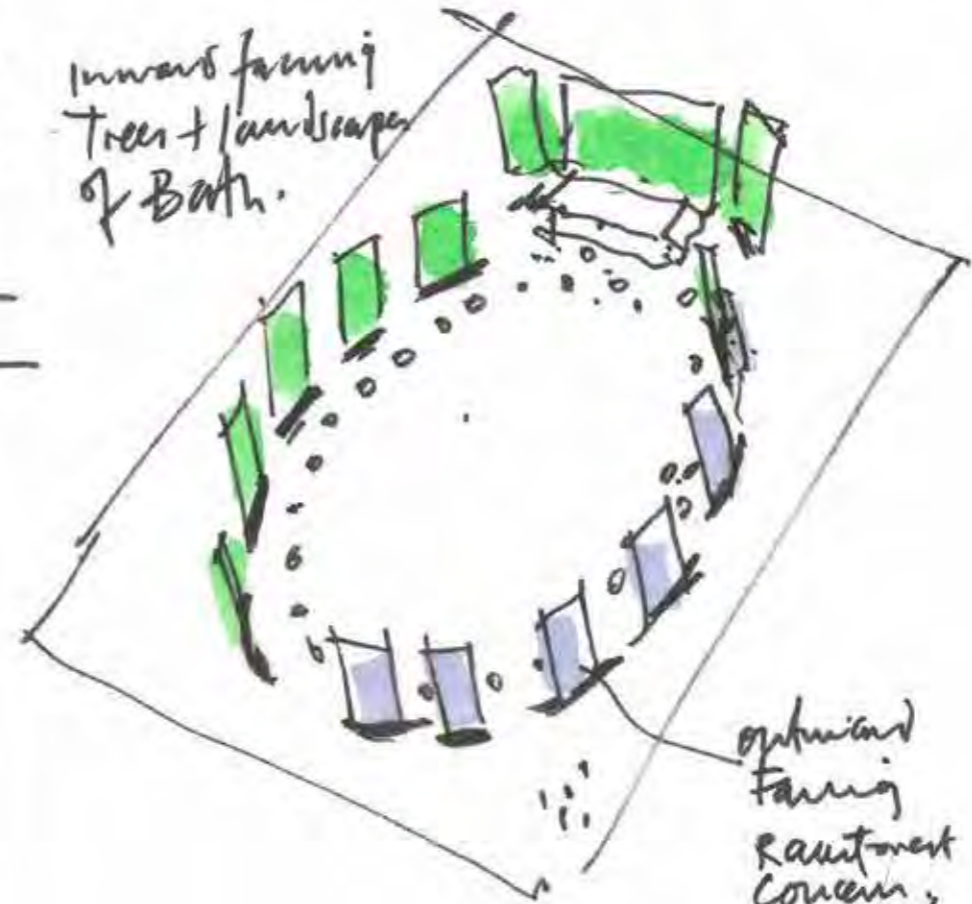
FCBS have proposals to integrate some structural pieces into the space made from a 250-year-old beech tree that was felled in late 2022. A tree as old as the Assembly Rooms. One idea is to create 250 planks/ pieces of timber from the tree which are then used to help frame the setting for the events and the exhibition.

Tea Room

Tree Room



Inward facing
Trees + landscape
of Bath.



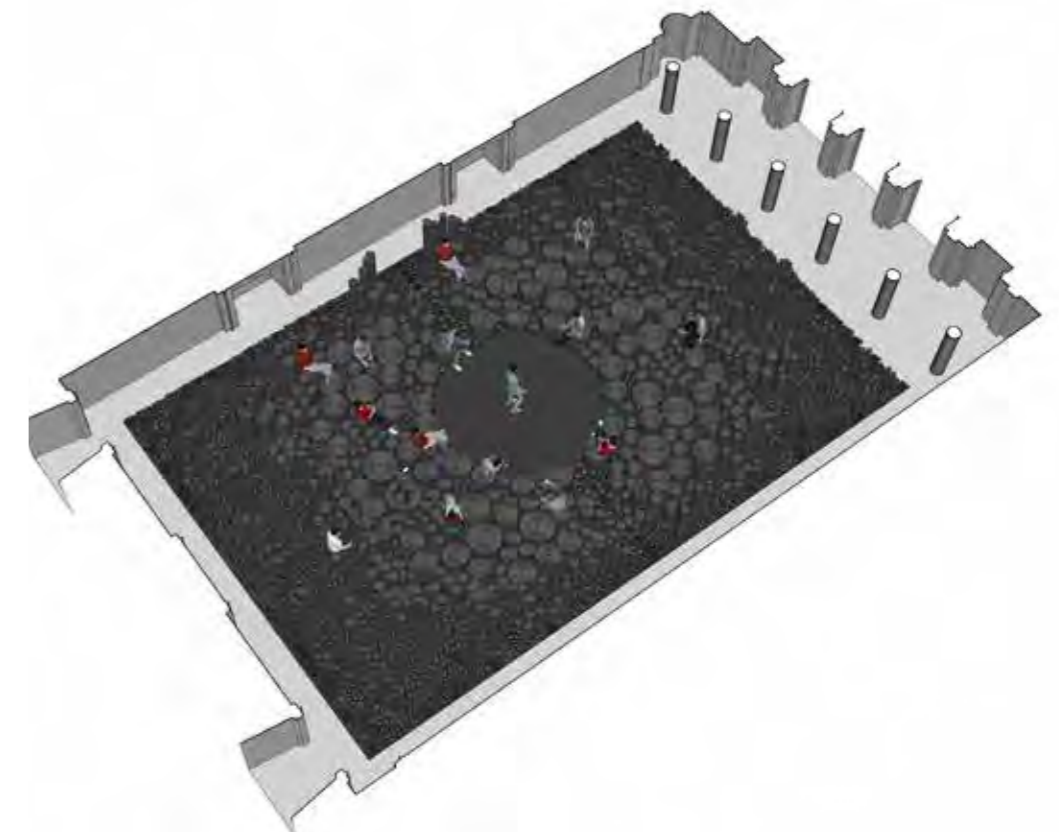
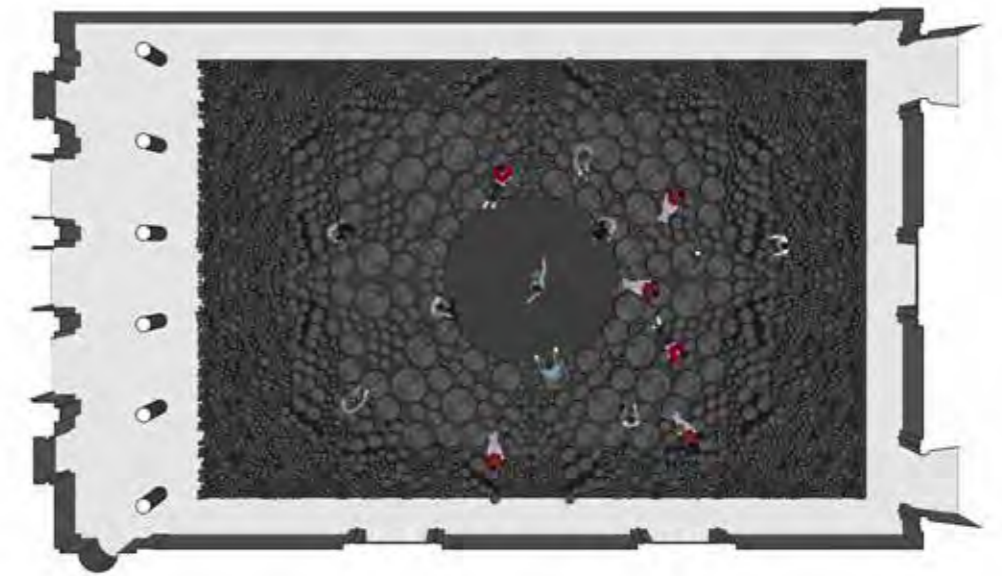
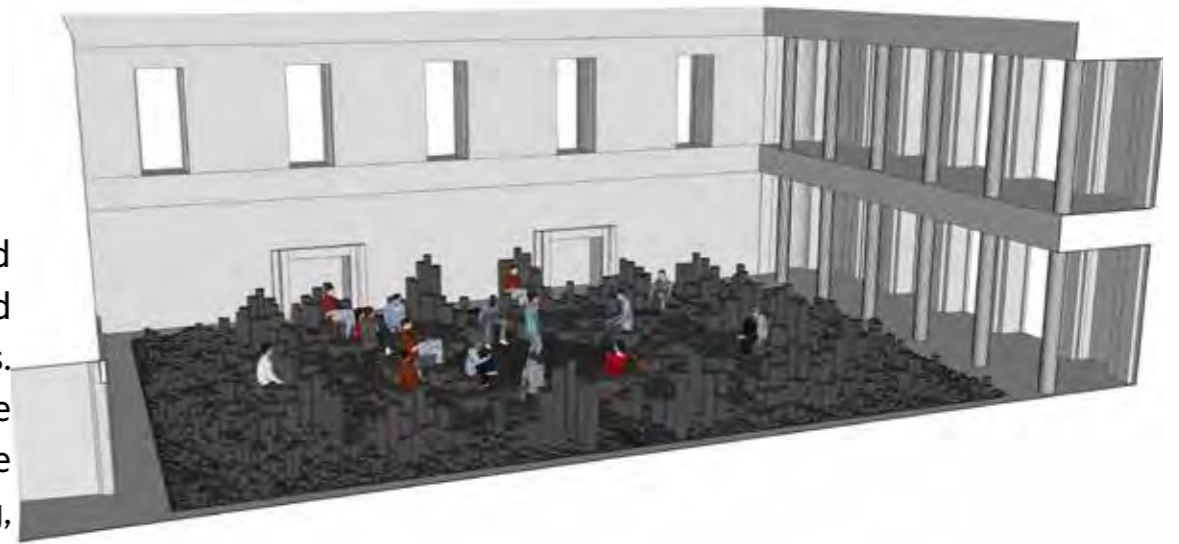
outward
facing
Rainton
Cove, etc.

For 23
Tea Room
Ring of trees.
6.2.23

FCBStudios

Tree Room

A celebration of time. A 250 year old fallen beech tree sawn into circular cross sections and reassembled within the heart of a 250 year old building. The new structure forms a radial time-line, with the largest and oldest sections placed towards the middle and the smaller, newer branches placed towards the outer edges. A central clearing is formed and provides a space for performance and lectures, where the audience are invited to informally inhabit the cut sections. Towards the edges, clusters of tall branches reinforce the sense of enclosure around the central space and provide a backdrop to exhibition boards. Before reassembling, the timber is charred. This is a natural preservative as well as enhancing the 'rings' of the tree, making them easier to count and understand the age of each section. Through its articulated reassembly, the structure also becomes an interactive playful experience, inviting children to balance and climb across the structure.



Tea Room

Bathscape Exhibition



Bathscape Woodland Inventory

Scale: 1:70,000



Bathscape represents the landscape setting of Bath and its World Heritage Site. The exhibition will feature stunning views of the city alongside information about significant trees and ways of experiencing the landscape.



Tea Room

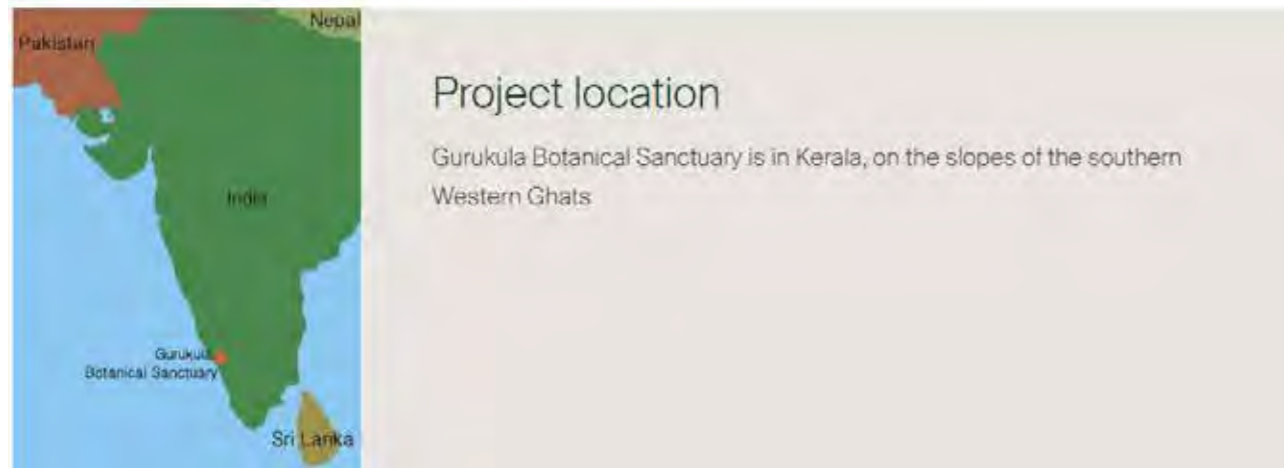
Rainforest Concern Exhibition



India

Gurukula Botanical Sanctuary

Gurukula Botanical Sanctuary is a haven for native plants of the Western Ghat mountains; a place of “immense global importance for the conservation of biological diversity” according to UNESCO.



Ecuador

Neblina Reserve

The Neblina Reserve is an important protected area of cloud forest, with extraordinary biodiversity and many endemic species.



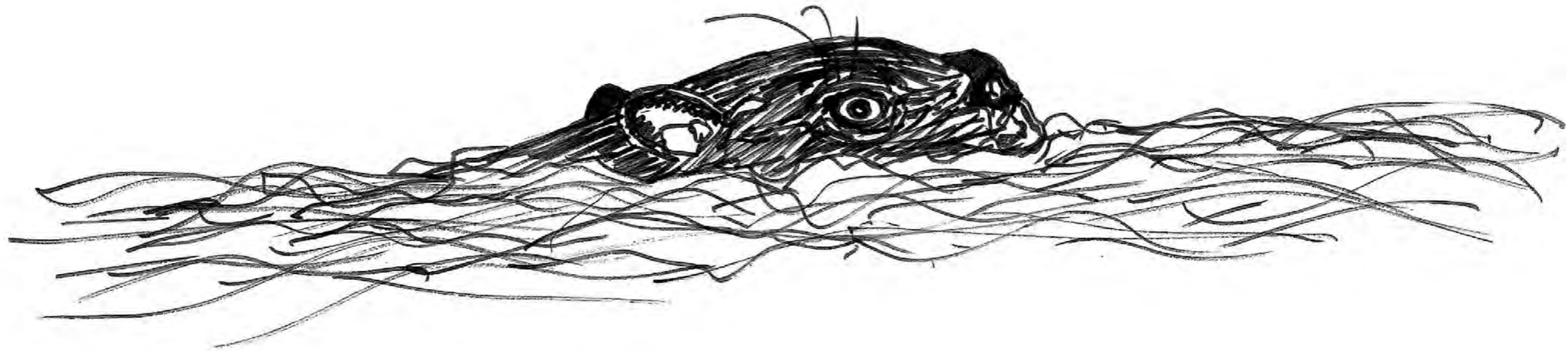
Grand Octagon

Beaver Lodge

In 2021, beavers were discovered living wild along the River Avon near Bath, not far from the National Trust's Bathampton Meadows and Avon Wildlife Trust's Bathampton Nature Reserve. As a keystone species the presence of beavers indicates a regenerating and healthy local ecosystem supporting greater biodiversity whilst bringing benefits for local land management.

The proposal is to celebrate this wonderful and positive ecological story by recreating a form of beaver den/dam, using local Ash or similar timber branches, within the Grand Octagon of the Assembly rooms. The den would sit at the centre of the space and its forms would complement the spectacular chandelier hanging from above. Classical design meets nature's architect.

The intention is to create a small space within the den that can be accessed by children and where they can discover more of the life and creativity of the beaver families living along the local river.



Feb 2023
Beaver

Grand Octagon

Beaver Lodge



F01 2023
Beaver Dam in Octagon
28.9.22.



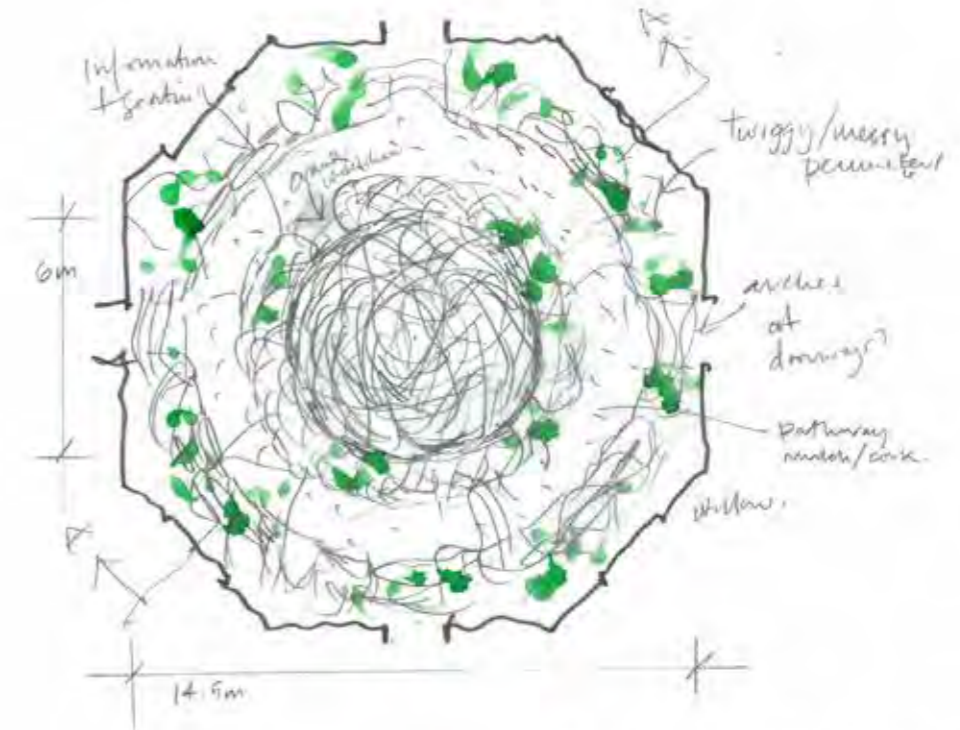
F01 2023
Beaver.

Grand Octagon

Beaver Lodge



willow + twigs
 perimeter walkway
 sound system
 crawling + wheelchair + sitting space only
 Forest of Imagination 2023
 Beaver Den - Simple Dome
 Section Study 1:50 AA
 17.2.23



Information + seating
 twiggly/messy perimeter
 arches at doorway
 Pathway inside/corner
 willow
 6m
 14.5m
 Forest of Imagination 2023
 Beaver Den - Simple low dome
 Plan
 17.2.23

Grand Octagon

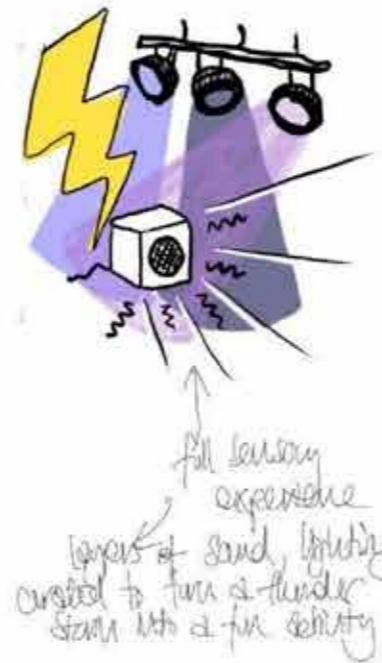
Beaver Lodge



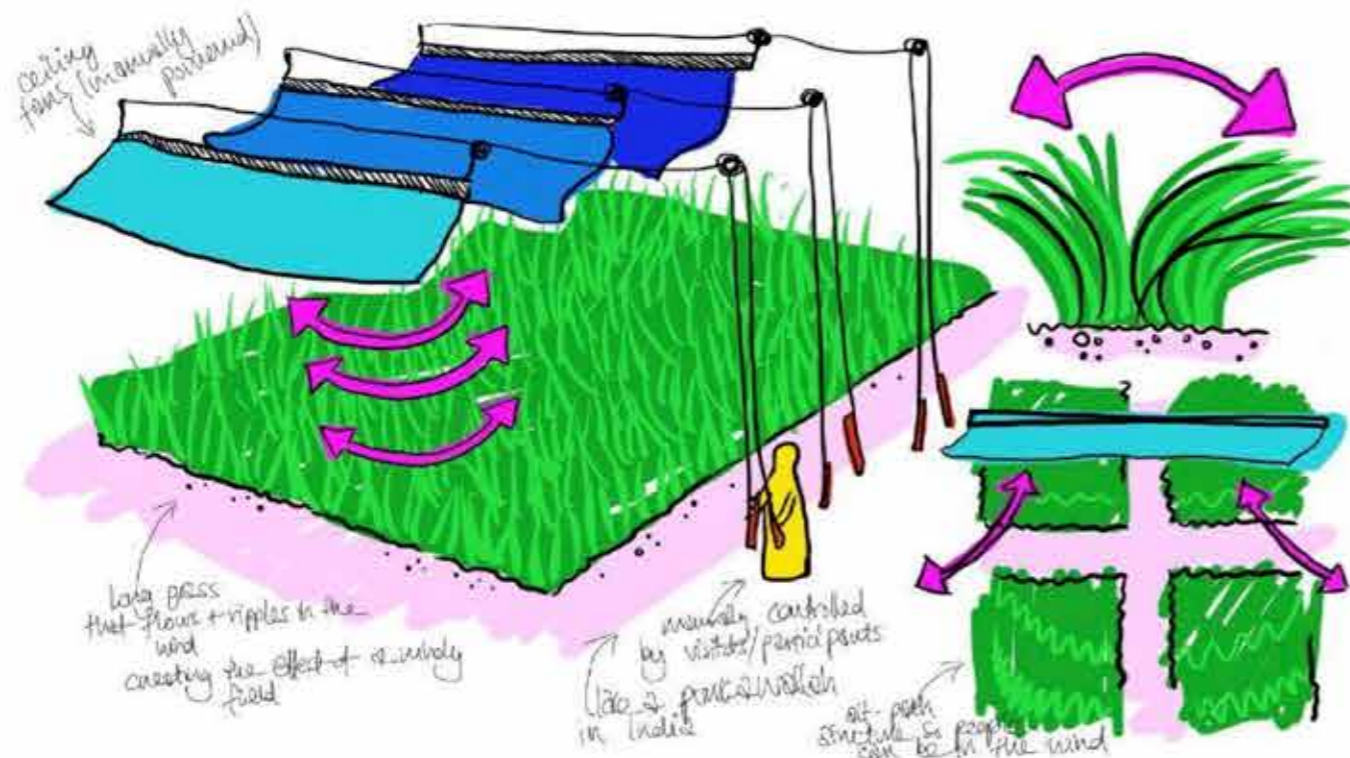
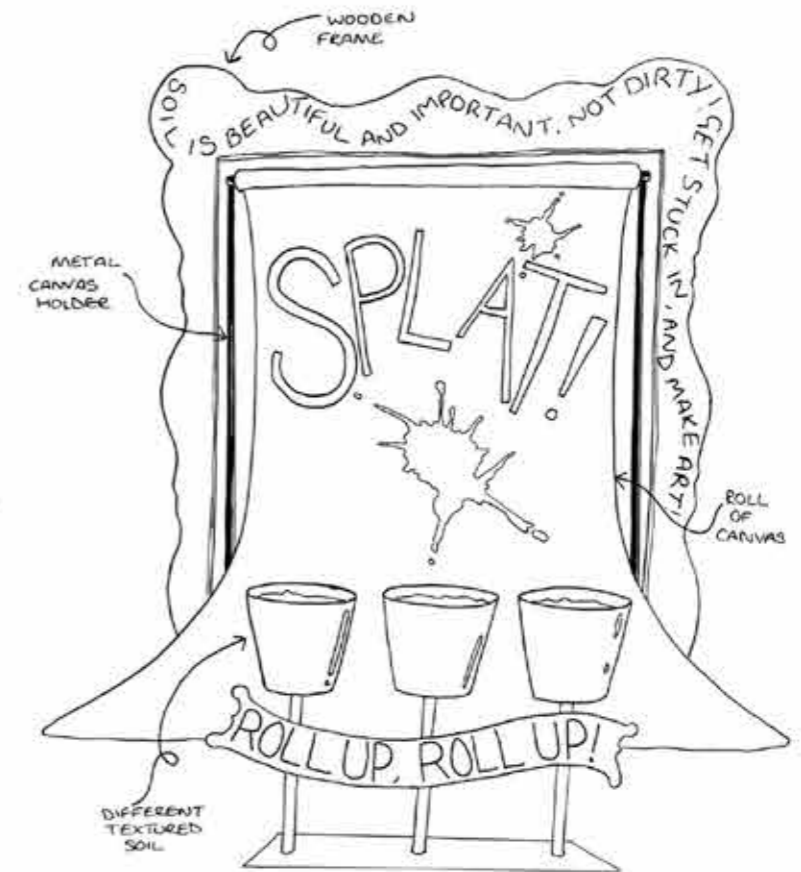
House of Imagination Workshops

Documentation Room

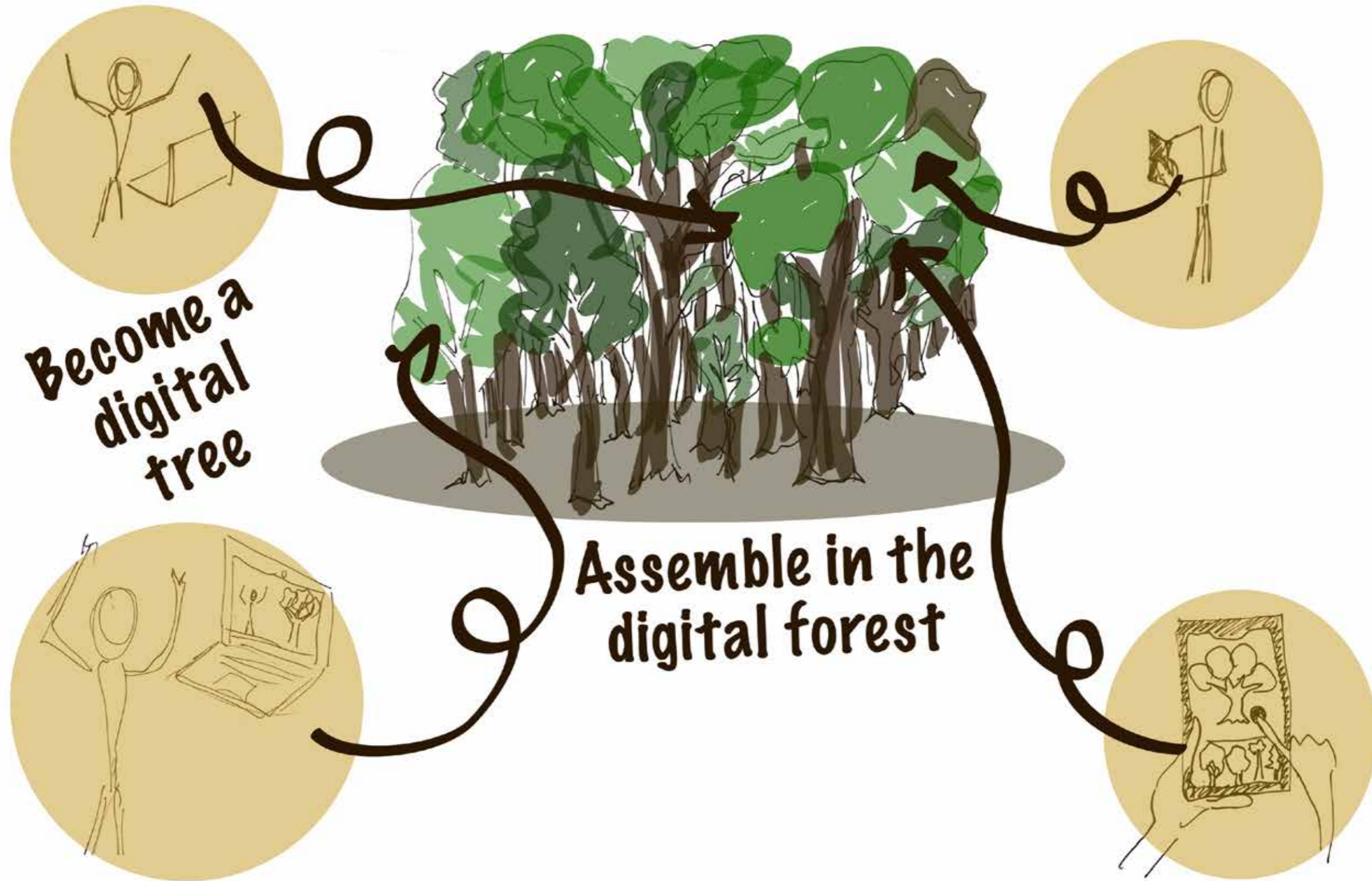
House of Imagination artists will work with local schools and invite children to design trees for the 'Extraordinary Forest': if you were a tree what would you be?



Amy Corcoran + Emily Boxall



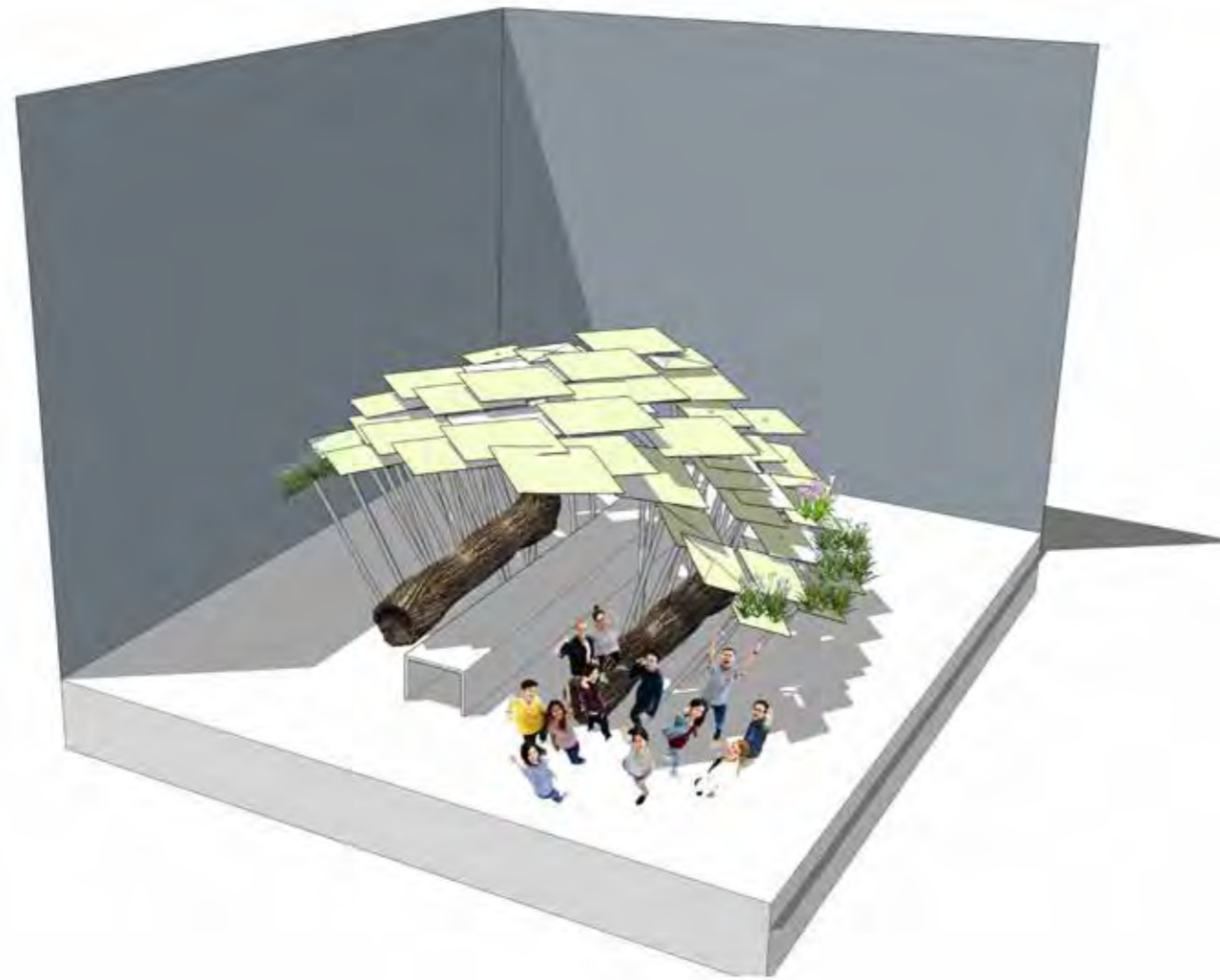
Bath University Games Design



Students from Bath Spa University's Games Design course will create a fun and simple way for remote visitors to create a unique tree to represent them so that they can assemble in the digital forest. This collected forest will be presented in the Assembly rooms with a game engine so that visitors can walk through the forest. If you could be a digital tree, what would you be?

Invisible Studio and Charley Brentnall

Community Forest Shelter

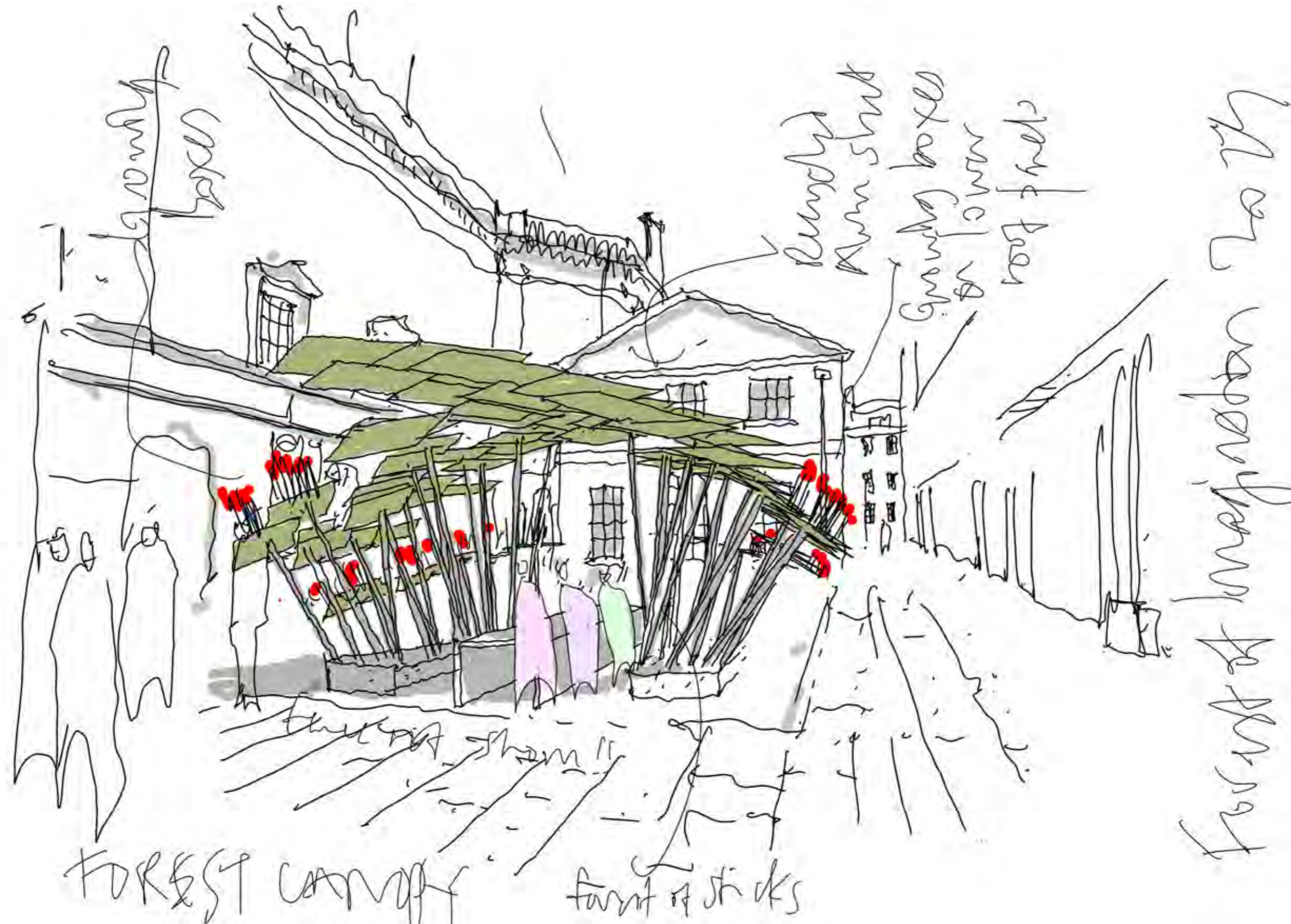


An innovative and striking timber shelter will be erected outside the Card Room offering a place to meet and rest and to hold outdoor workshops. The shelter will be initially constructed by architecture students from Reading University and relocated to this site for the duration of Forest of Imagination before being finally relocated to a local woodland.



Invisible Studio and Charley Brentnall

Community Forest Shelter



Bath Community Kitchen

Community Kitchen in the Forest

This year the Forest of Imagination is excited to host a brand new community initiative - the Bath Community Kitchen. Its aim is to create a community kitchen that would use food to bring about positive change for vulnerable groups in Bath and surrounding areas. The key idea behind the initiative is in using cookery and sharing food as a therapeutic tool to improve mental and physical wellbeing for local people. We will also build a small growing space outside the venue to enable us to grow some of the fruit and vegetables we will use to make delicious and nutritious meals. In keeping with the ethos of the Forest of Imagination this will be a creative, participant led cookery space, harnessing the imagination and skills of the people who come to cook.

Our focus is to benefit a range of disadvantaged and socially isolated people who could benefit from this experience. These include but are not limited to:

- People with mental health issues
- Refugees and Asylum seekers
- Young people with SEN and disabilities
- Families living in poverty
- Elderly people
- Other socially marginalised groups

The project will improve the lives of local people, delivering improved mental and physical wellbeing through:

- Increased confidence and self esteem
- Reducing social isolation
- Providing a safe space for people to come together and enjoy food
- Promoting healthy eating
- Increasing cookery skills in the community
- Providing nutritious meals to vulnerable people
- Promoting the use of local/ethical ingredients



Clare Day

“Sitting quietly with the moon”

In a quiet dark space in the Assembly Rooms, Clare Day would like to project an image of one of her small ceramic moons (such as this one, see attached image no. 1) very large on a wall. The projection of the moon would be the only thing in the room, which would be very plain and soothing, intended as a contemplative space especially for people needing surroundings that are calm.

In the pandemic we were all isolated in our own spaces, but all looking at the same moon, marking a steady cycle of time when all else was unknown. This felt consoling.

The interactive element with this moon would be that visitors could make trees from recycled and found materials, see image number 2, and the tree could be held by the maker in front of the projector, casting a big shadow of a small tree across the moon. The trees would be made outside, and then carefully carried to the projected moon. There would be moon inspired music by Gus Wallis playing softly in the space.

We could then take a photograph or film of this shadow play, with the person's permission, to document.



Image 1, example of a ceramic moon by Clare Day, 2021 (photo credit John Taylor)



Image 2. Tree made by a child on a school's day Forest of Imagination workshop, facilitated by Clare Day, 2022. Image credit: The Egg.

Martyn Ware

'It's Always Ourselves We Find In The Sea'



Matthew Leece

Green Ceilings



What if you could reach up and harvest your dinner from the sky above you? What if you had a veg patch on the ceiling or a chandelier of living mushrooms? Could we sustainably grow food inside within our homes and workplaces? Could the very fabric of our city's be growing? Could we grow our homes? What ingredients do we need?

Matthew proposes an indoor farm of edible growing clouds to sit alongside the more traditional outdoor community garden. Matthew will experiment with different technologies, playing with light, temperature, air, moisture and nutrients visualising elements of the process of plant growth, while also producing food for the community kitchen.

This project hopes to work closely with the community garden, community kitchen and community dining table, linking to a experiment around biodynamic growing and utilising links with scientists, ecologist and local growers.

Wild Wonder

Wild Wonder is a book festival in the forest. Run annually at Westonbirt Arboretum it celebrates nature, the great outdoors and books. To celebrate Wild Wonder 2023 we will explore bringing book events to Forest of Imagination and celebrating the world of children's book and the illustrations that bring them to life.



Rabbit Holes Collective

Rabbit Holes Collective involves a group of artists and creative professionals exploring adaptive podcasting to create unique content and invite (especially young) people to metaphorically 'fall down a rabbit hole' to connect more deeply with nature. Individuals discover how they can use adaptive technologies to create podcasts unique to the listener and their context.

underGrowth is an ongoing project between Composer and Sound Designer Joseff Harris, Forest Ecologist Dr. Tommaso Jucker and Computer Scientist Dr. Tom Mitchell.

underGrowth is unearthing the intelligence of forest communication networks in a collaboration between sound, science and technology, blending binaural field recordings and original composition.

Kathy Hinde, an Audiovisual Artist has conducted Deep Listening Walks to inform the development of adaptive podcasts. These involve sharing a listening experience from an unusual perspective (often underwater), to reveal the often hidden qualities of our surroundings. The act of Deep Listening is to practice unfiltered listening; to pay attention; to attend to, and to tune in to our surroundings, which can be a powerful way to connect more deeply with nature.



Patchlarks

Mysteries of the Mini-Forests and The Giant Tree Seed

Patchlarks are back to build another immersive narrative adventures for children. Mysteries of the Mino Forest and The Giant Tree Seed will focus on primary children aged 7-11 and their families, though with content that can be engaged with by everyone. Families will follow the story of the mosslings - tiny fictional creatures that live in patches of moss - and will focus on building imaginal/ storied relationships to the natural world, stimulating curiosity and wonder – and vitally empathy toward the natural world – as well as imagining how humans can re-stitch their lives with the wider web of life. Throughout there will be an emphasis on building a sense of agency in participants – within the fiction of the project and spreading from there into their engagement with the world at large. Along with this there will be chances to get curious about important processes in the natural world including ecological succession, seed germination, the “wood wide web” and other.

This includes several elements;

1. The trail will form an adventure that families can participate in through the month of the Forest of Imagination relatively independently. The trail will consist of a map and signs through the space, there may be opportunities to incorporate tech into the trail offering a media experience through mobile phones and QR codes.
2. A zine giving information and activities about moss in collaboration with the British Bryological Society.
3. A live artist-led set of workshops that would pop up for two days, with a narrative tied to the mossling’s roles as witnesses for nature. This live offer would take the form of an investigation of a giant, bizarre and mysterious tree seed from another world. This seed would be the heart of a live activity adventure with storytelling, a drawing activity, tasks and challenges. At the heart of it will be an “investigation laboratory” with lots of linked information and inspiration about tree seeds.
4. With the Rabbit Holes Collective, creating an Adaptive Podcast as a world building element that deepens the immersive experience.

This project will tie in the exciting work is aligned with Rabbit Holes Collective creating an Adaptive Podcast into this work using it as a world building element that deepens the immersiveness of the project.



Jessica Palmer

Reading Trees and Mr B's Bookshop

Jessica's proposal is for a series of Reading Tree Houses or Platforms, positioned in various indoor or outdoor locations to fit into the Forest landscape, filled with books and cushions for quiet contemplation and reading. These will be made with reclaimed wood and other recycled materials. Each will be stocked with books, old and new.



Musical Imaginings, Kate Petty

1) a music journey where melodies invite you to imagine.....

from golden fields to bewitching forests, and cheeky birdsong to the babble of a river as it runs out to sea,

Join Kate and her harp in the Forest as music takes us on an imaginary journey...



harp placed somewhere within the Forest landscape so people can immerse themselves in space informally, sit around it or free to wander about as they listen...

a 30-min mix of folk and classical pieces curated into themed sets to be introduced informally and woven together from the harp



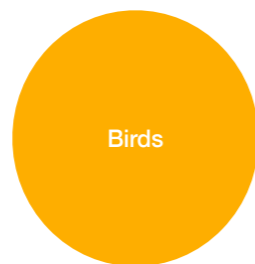
Fields/pastoral

Codiad yr Haul
Bugellio'r Gwenith Gwyn
Pant Corlan yr Wyn



Forests/returning home

Llwyn Onn
Hiraeth
Equisse



Birds

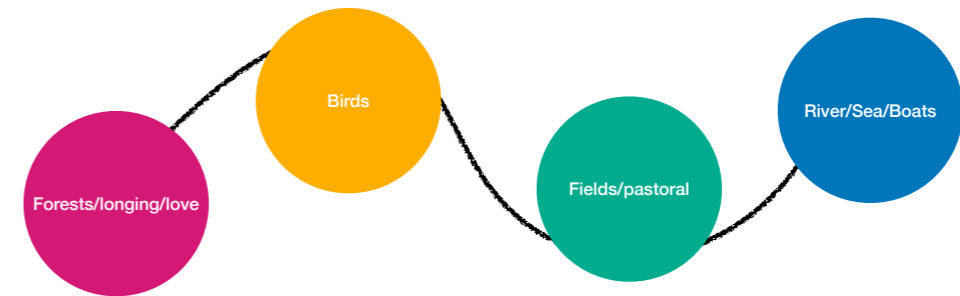
The Cuckoo
Y Deryn Pur
Aderyn Du sy'n
rhodio'r Gwledydd



River/Sea/Boats

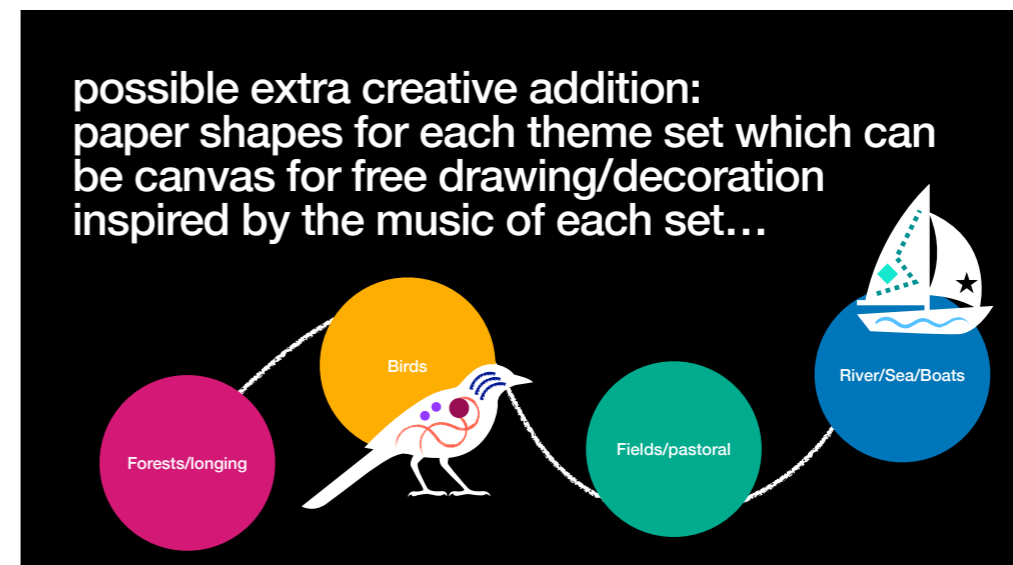
Tros Y Garreg
Ar lan y mor
Si hei lwli mabi

co-creation of musical journey with those listening...which place to start? what story will we make together?



possible extra creative addition:

paper shapes for each theme set which can be canvas for free drawing/decoration inspired by the music of each set...



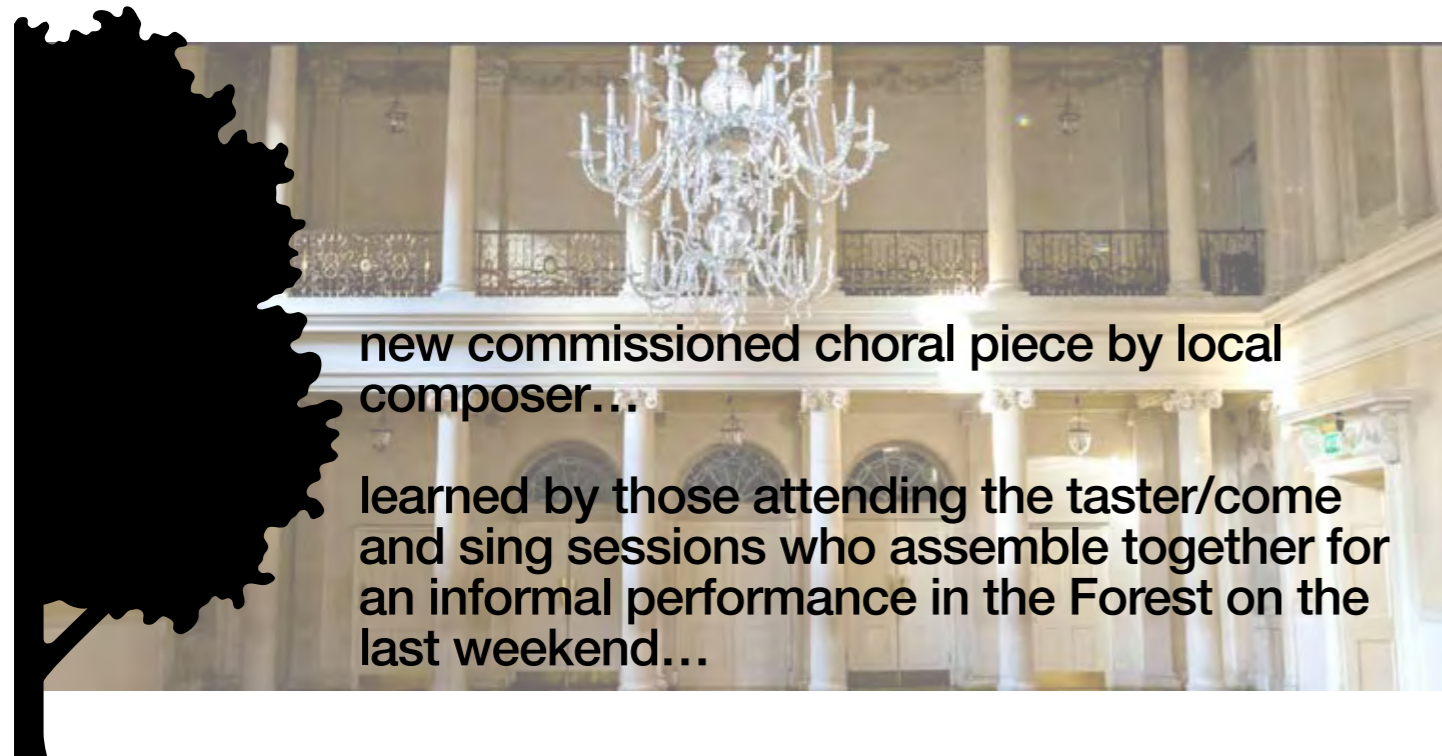
participants invited to add their creations to the Forest landscape (or they can take them home if they would rather!) ... shapes could have listening suggestions/invitations/QR codes printed on one side to encourage explorations

Musical Imaginings, Kate Petty

2) assemble in the forest and find your voice ...

community taster/come and sing sessions in the forest, led by local Bath choir director...

running each weekend of Forest '23
could also potentially be part of schools' project



new commissioned choral piece by local composer...

learned by those attending the taster/come and sing sessions who assemble together for an informal performance in the Forest on the last weekend...

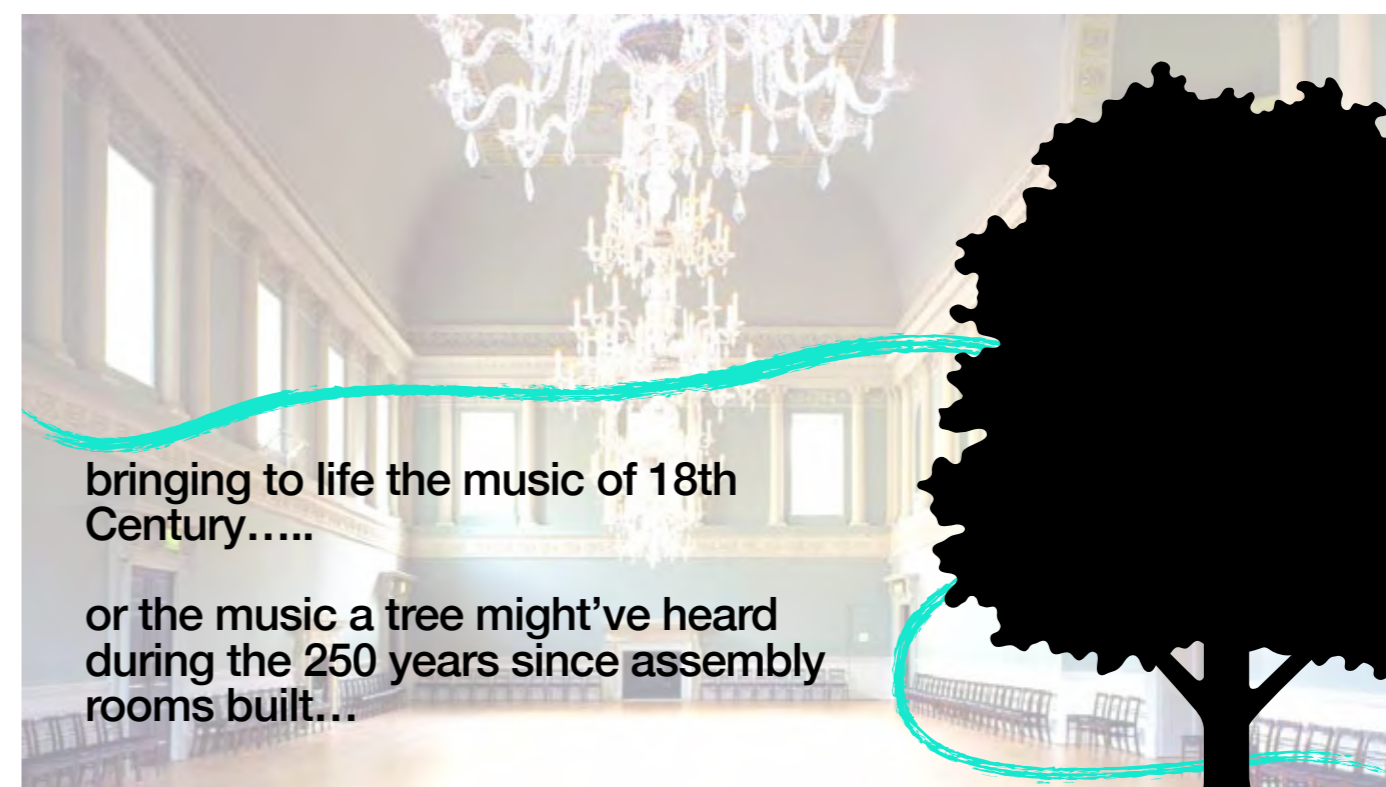
3) immersive encounters with live music/live soundscapes in the forest

what if/imagine if...

Louisa, Lady Clarges (and her harp) were transported from 18th Century Bath Assembly Rooms to our imagined Forest...

Louisa owned several harps and made regular trips to Italy to pursue her musical interests. Her and her husband Sir Thomas promoted outstanding foreign musicians in England...

maybe some 3 or 4 other musicians (piano/harpischord, recorders, singer/choir) could join her in the Forest ballroom space for mini, informal, immersive encounters...



bringing to life the music of 18th Century.....

or the music a tree might've heard during the 250 years since assembly rooms built...

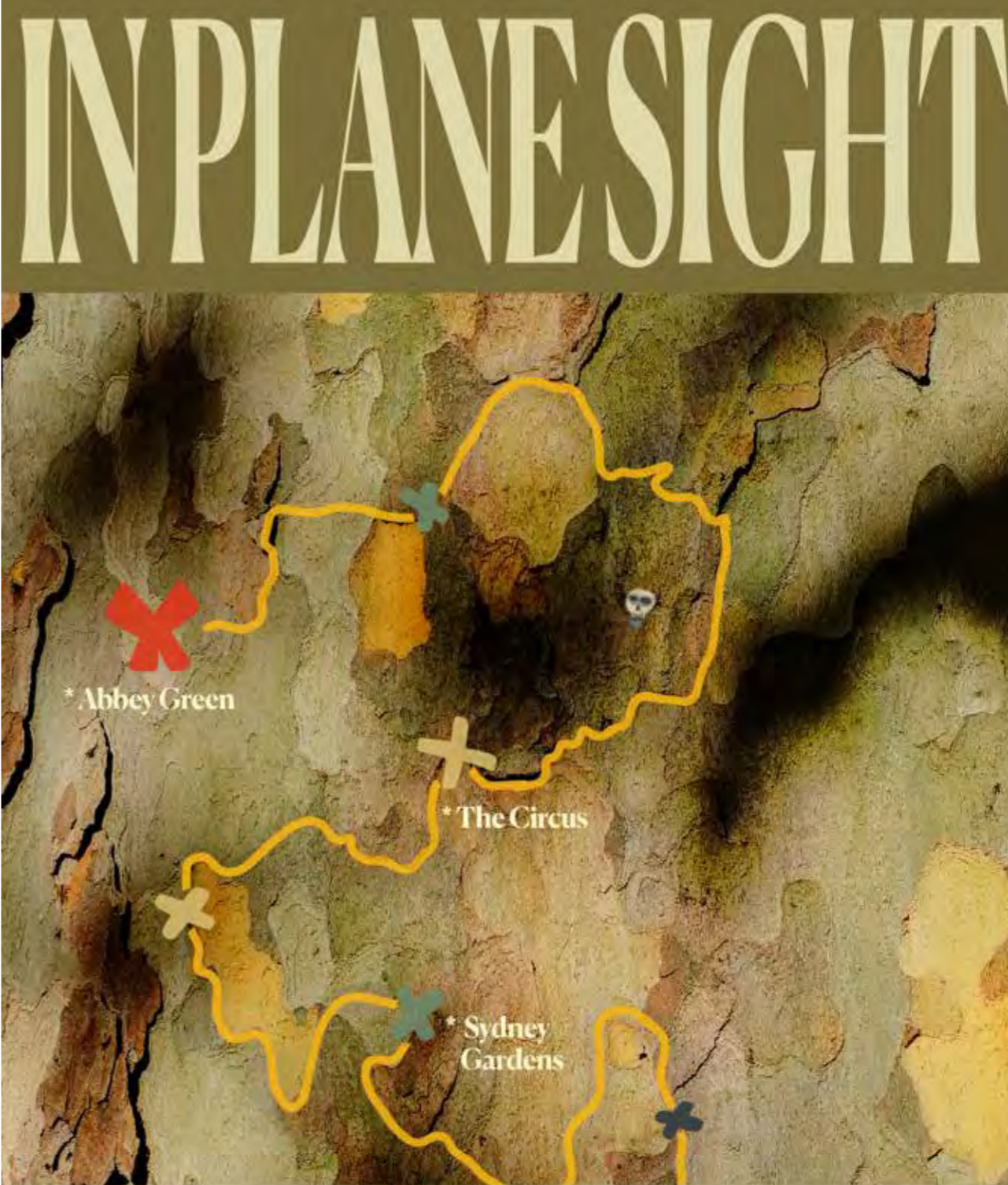
Sam Furness & Creative Quests

In Plane Sight

In Plane Sight is a Bath city-wide audio experience and workshop series brought to you by the team at *Creative Quests.

London Planes are some of the world's most popular street trees and many of them can be found at iconic spots in Bath City Centre. The circle of mammoth planes in the Circus. The Abbey Green Plane - one of the oldest architecturally planted trees in the world! In this imaginative and curiosity-filled audio experience you will explore how the London Plane tree is one of the truly great arboreal icons of the UK. This story will also prompt you to consider what other wonders are hiding in plain sight and how you might unlock the ways to see them.

During Forest of Imagination we will also host a weekend of workshops, walks and talks exploring links between creativity and nature connection.



IN PLANE SIGHT


*Abbey Green

*The Circus

*Sydney Gardens

An interactive audio experience and workshop series exploring one of the UK's most iconic, overlooked, arboreal figures... the London Plane tree.

Join Creative Quests, in Bath, on a journey to make the invisible, visible!



Mother Nature Supper Club

Kilter Theatre

What are we going to do about the humans?

As the Assembly Rooms are transformed into a living forest, Kilter installs a circular tree-trunk table in a clearing. The table, made from salvaged materials & living plants, is a performance space, a meeting place & a stand-alone installation for visitors throughout the festival. An integrated cycle-generator, powered by visitors, illuminates a chandelier of branches & plays an enchanting, surprising soundtrack through hidden speakers - it reminds us the forest is alive & listening.

As dinner time approaches, audience members arrive to be greeted by a hostess - an unexpected Mother Nature, defying expectations & stereotypes. She gently enrolls members of the growing audience as representatives of the forest's natural world. "Fox, I am so glad you could make it. Let me give you your coat." "Woodlice, there are so many of you! Have some bark to chew on!"

The woodland community sits down to share a three course seasonal, local, vegetarian feast served by Mother Nature & an additional waiter/performer/facilitator. Using Kilter's uniquely immersive participatory performance style, a conversation is delicately nurtured. The audience are empowered to speak so that all of nature is heard. Mother Nature has called this meeting for a reason: the woodland is dying, the climate is changing, a resolution must be reached. What are we going to do about the humans? The audience leave in touch with their natural selves & inspired to champion their respective counterparts from the supper club as we ALL go forward together to confront the climate emergency.



Pippa Pixley Workshop

Drawn From Nature

As you walk through the woods keep your eyes open for natural twiggy pencils, fallen leaves to collage and print, and for tannin-rich dyestuffs: catkins, acorns, oak apples and old chestnut husks. Down by the stream search for stones that stand out for their rich hues - try rubbing them to see if they are good sources of red and orange ochre pigments.

In this drop-in workshop we will experiment with a wide variety of found and foraged natural art materials to create artwork inspired by the forest. You can try sketching trees with an orchard of different charcoals; capture the sweep of the landscape with washes of earthy tones drawn directly from richly coloured rocks; and produce leafy prints using a palette of naturally-sourced pigments.

Explore the potential for creating bold and beautiful artworks using just the materials that nature gifts us!

“I believe that we each have a responsibility to be stewards of the wonderful natural world we inhabit.” – Pippa

This workshop is hosted by Pippa Pixley, author and artist, an active ambassador for natural and sustainable art materials. She contributed a foreword for the latest edition of *The Artist's Handbook* and has had numerous articles and picturebooks published.



Grace Swordy and Jono Burgess

Seeing Yourself As Soil

What can we give the soil, so it gives back to us?

These workshops will playfully explore ideas around our connections to the ecosystem beneath our feet.

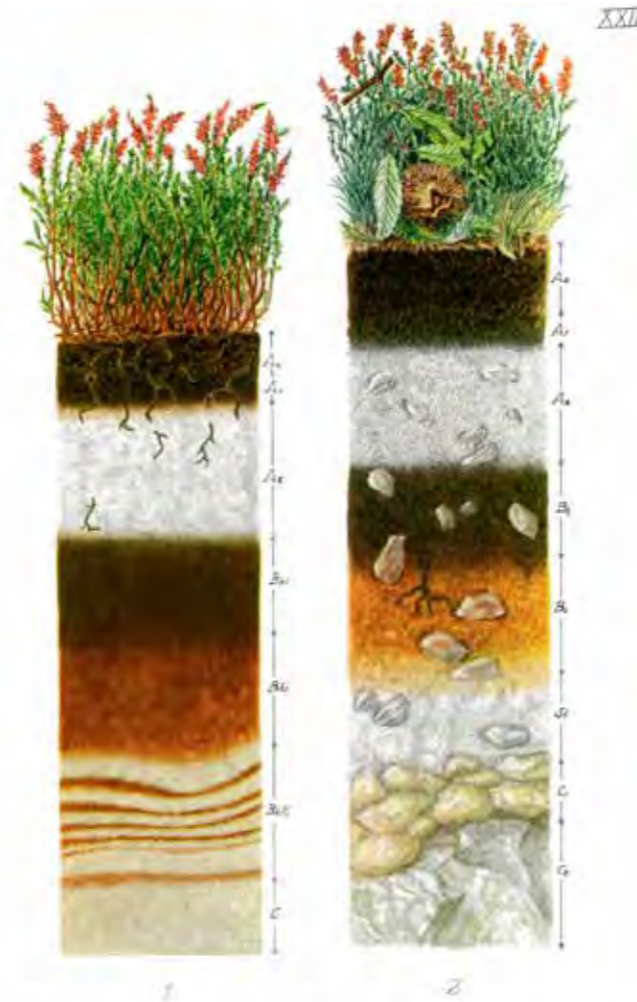
How are we reflected in the layers of the land?

Using games and making to represent and identify how tiny elements come together to make up the richness of the soil from which all life occurs.

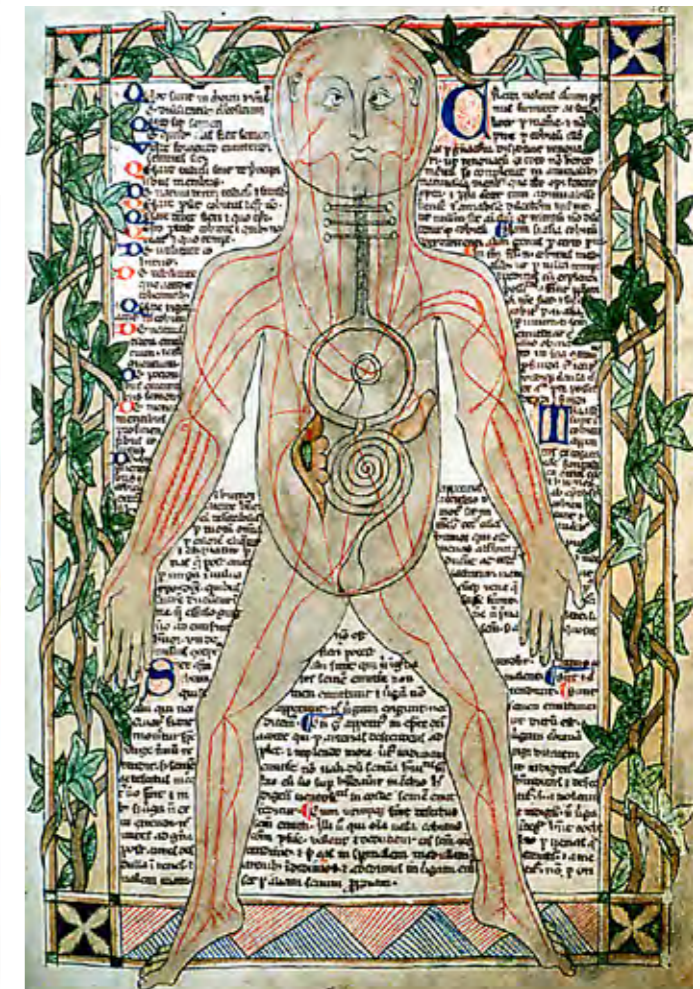
The word soil is derived from a latin word 'solum' meaning earthly material in which plants grow

'In some Native languages the term for plants translates to "those who care for us"'

Robin Wall Kimmerer



Explanation of plate XXII
1. Humus-podsol on dune sands under Calluna heather with two ortstein layers (Ba-Bbal) followed by a series of ortsteinbands (Dorum, Bremen, North Sea coast).
2. (Asturian) Iron-humus-podsol under grassy heath with Erica ciliaris under oak and chestnut trees on silicious sandstone (Cantabrian Cordillera, Asturias, 300 m.).
From W. L. KUBIENA - THE SOILS OF EUROPE
Consejo Superior de Investigaciones Cientificas Institute of Soil, Madrid.



Barrowland Family Portrait

Family Portrait

Family Portrait is an interactive video installation work, combining striking imagery and choreography, capturing Barrowland Ballet's Artistic Director, Natasha Gilmore, and her three children in an intimate portrayal of family life.

Audiences will see the family through choreographed sequences and more candid, natural 'off camera' moments as they encounter and embrace the many different landscapes of Scotland.

With space to roam, the children encounter rabbit skulls, converse with spiders, make war paint with berries and discover the fun of burying their mother in bark.

The work takes us on a geographical and emotional journey, giving the audience an in-depth insight into what it is to be a mother and a single parent to three young children. With humour and candour, the work shares an honest depiction of what family really is – responsibility, joy, balance, intimacy and, most of all, love. A celebration of getting out into nature, it invites you into an intimate journey of family relationships with all its relentless and glorious chaos!



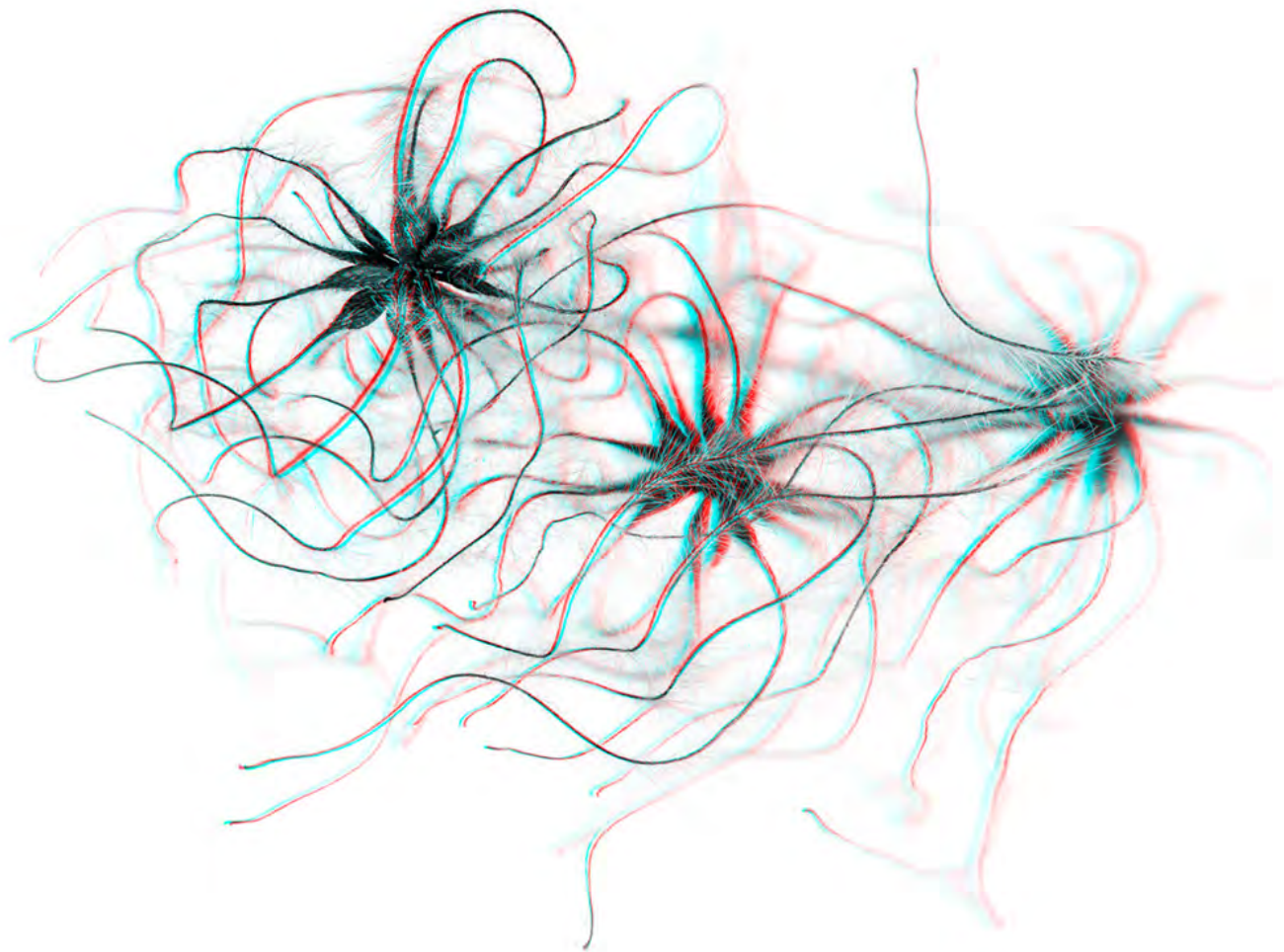
Creative Team

Performers - Otis Bazie Gilmore, Inigo Bazie Gilmore, Frieda Bazie Gilmore, Natasha Gilmore



Sebastian Cramer

TWO VIEWS on Plants



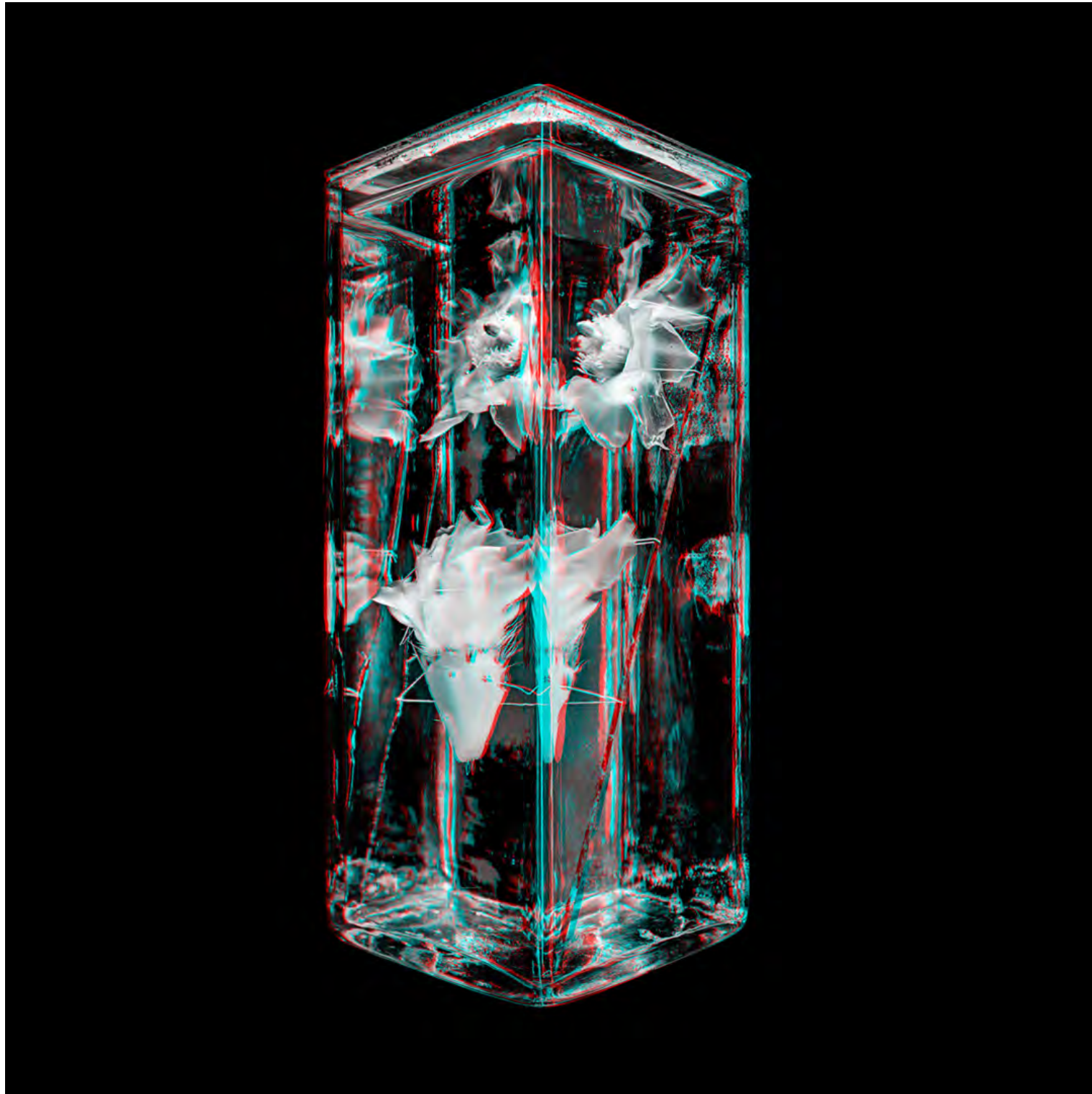
Stereoscopic photography is as old as photography itself, but still as fascinating as it has always been. It lets you explore the richness of nature with so many details, which are hidden in a flat two-dimensional image. Dive into the stunning perfection of nature in a 3D image.

Sebastian is offering to show works from his photographic project, *TWO VIEWS on Plants*. The images of plants, leaves and glasses with historical preparations are equally interesting for children and adults.

The exhibition will be presented in the historical buildings in Bath, bringing back the fascination the Victorians had with stereo imaging in the 19th century, in a modern and contemporary approach.

Sebastian Cramer

TWO VIEWS on Plants



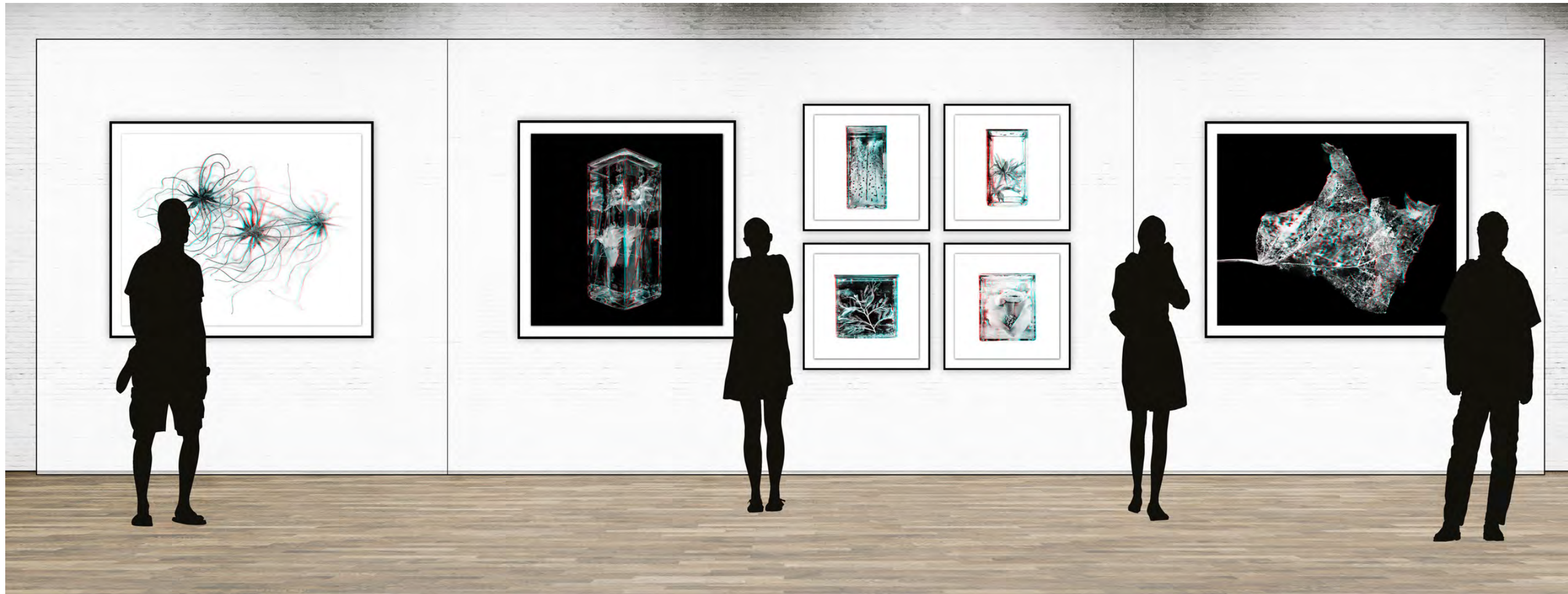
Viewed without 3D glasses, the visual impression is flat and graphical. Vivid red & cyan lines carry a secret which is only to be revealed when 3D glasses come into play. The images morph into a photographic sculpture.

The exhibition features various plants and blossoms floating in jars of alcohol. Most of the plants were collected prior to World War I. They have been sitting in these jars for over a hundred years. Each image is a glimpse into a time capsule: into the past when nature yet had to be explored and stereo photography was highly successful within the genre.

At the same time, questions arise about how fragile our environment is. Can nature only be preserved when it's sealed away? How is beauty affected, when kept in an artificial environment?

Sebastian Cramer

TWO VIEWS on Plants



„I ask you to take this book and do the same: throw yourself into the staggering realm of spatial perception that it offers you. This is a rare chance to continue learning to see... Never give up the expectation of seeing beauty and miracles for the first time.“

Wim Wenders in his essay for the book *TWO VIEWS on Plants*.

Sebastian Cramer is a Berlin born director and director of photography for commercial film, content, documentaries and is a specialist for 3D-films. Among others, he worked as a director of photography on stereo projects for directors like Wim Wenders and Michel Comte. He also shot the Grammy-Award-winning 3D Blue Ray „The Catalogue“ for Kraftwerk, the pioneers of electronic music.

Andrew Amondson

Living Tree 2023 - Exterior Installation



Concept Art: Rosie Wood - Bath School of Design

Continuing in the Forest spirit of co-creation, Andrew Amondson will invite architecture students from Bath Spa University to co-design the next iteration of the Living Tree for Forest of Imagination 2023. The design challenge is to adapt the existing structure to support potted pollinating plants, transforming the Living Tree into a blooming, buzzing and beautiful living sculpture, welcoming visitors inside to a symphony of smell and sound.

The community activated installation is a social sculpture made up of flowering plants grown by volunteers in the lead up to Forest of Imagination. The installation is a celebration, a work of ecological art made by many hands and a coming together for the community. At the end of Forest, the potted plants will be planted in various locations throughout Bath.



Forest of Imagination is a partnership between Grant Associates, House of Imagination, Feilden Clegg Bradley Studios and Bath Spa University working alongside the creative, cultural and educational community of Bath. Each year we re-imagine a familiar space to highlight the importance of nature and imagination in all of our lives.

Partners, Sponsors and Collaborators



Assemble in the Forest



Forest of Imagination 2023